



INSTRUCTIONS

Model 310

Part #706662

Assembled Size:
9.3'W x 4.6'D x 7.3'H
sun-huts.com



2 PEOPLE
Recommended
for Assembly

BEFORE YOU BEGIN:

Make sure you have a clear, unobstructed area to work in. Lay out all poles and connectors, grouped according to their size and/or shape. **2 PEOPLE are recommended to safely lift and fit tent body over assembled frame.**

PARTS LIST

10 Floor & Ceiling Poles
54.4" 1382mm

9 Floor & Ceiling Poles
54" 1372mm

12 Wall Poles
43.2" 1097.5mm

6 Straight Pole Connectors

2 3-way Straight Connectors

8 3-way Corner Connectors

2 4-way Straight Connectors

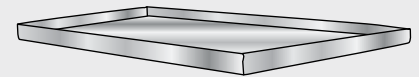
12 Equipment Hanger Connectors

2 Window Covers

2 Vent Covers

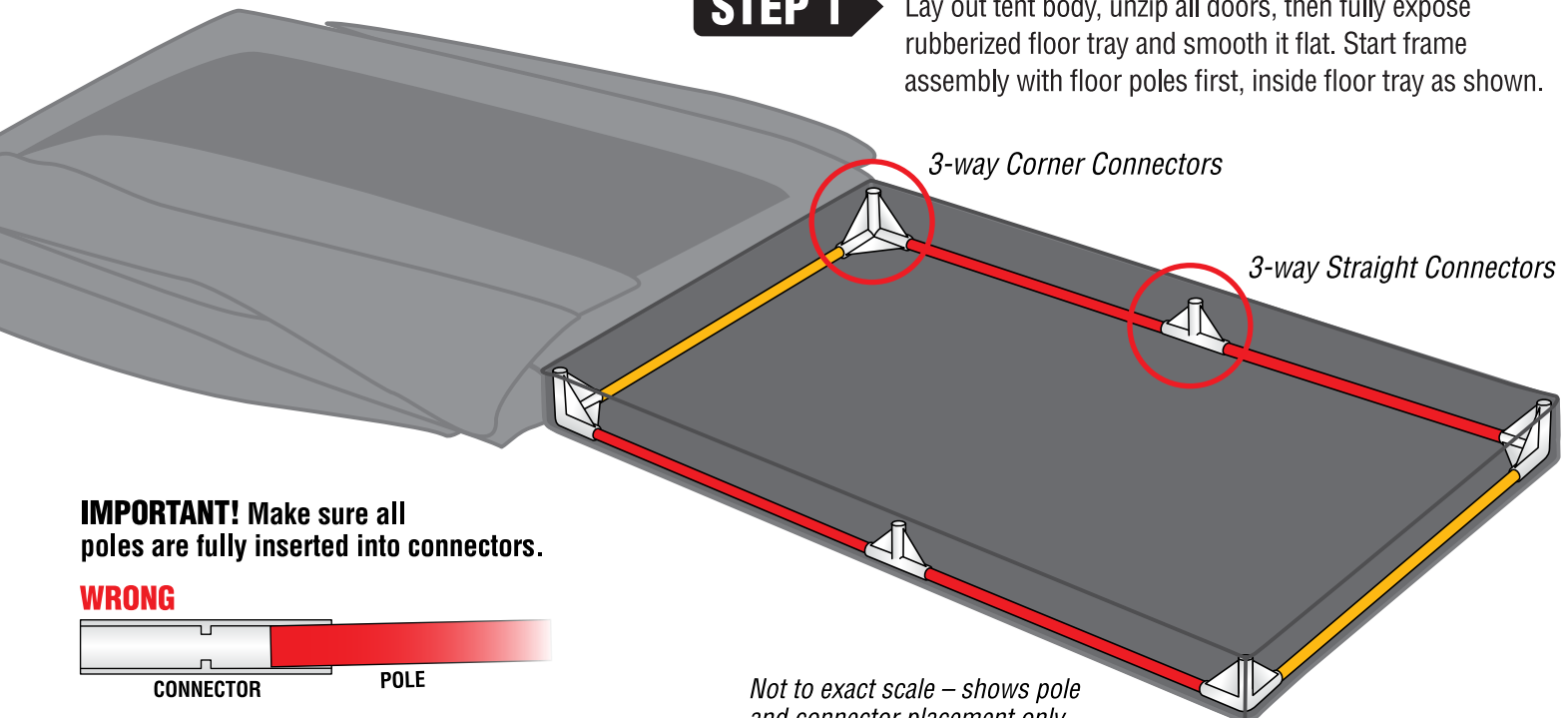
2 Equipment Straps

1 Removable Mylar Floor Insert



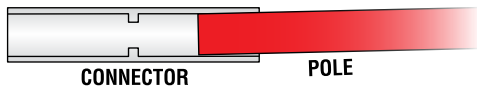
STEP 1

Lay out tent body, unzip all doors, then fully expose rubberized floor tray and smooth it flat. Start frame assembly with floor poles first, inside floor tray as shown.



IMPORTANT! Make sure all poles are fully inserted into connectors.

WRONG



RIGHT

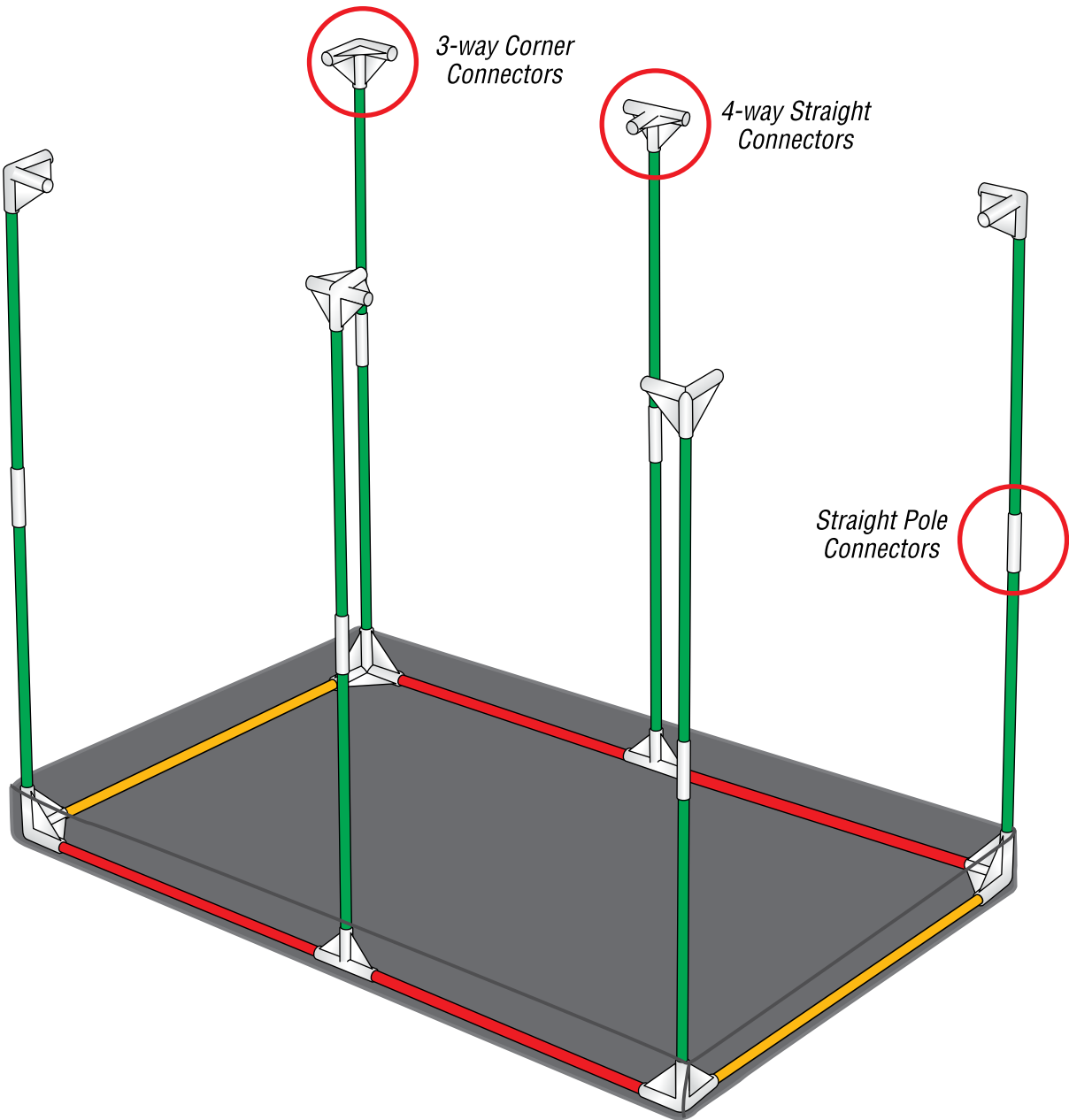


Not to exact scale – shows pole and connector placement only.



STEP 2

Add wall poles, then 3-way Corner Connectors and 4-way Straight Connectors at top.



STEP 3

Assemble Ceiling Poles and Equipment Hanger Poles.

Equipment Hanger Poles:
Repeat this 3-pole configuration
for both sections of ceiling.

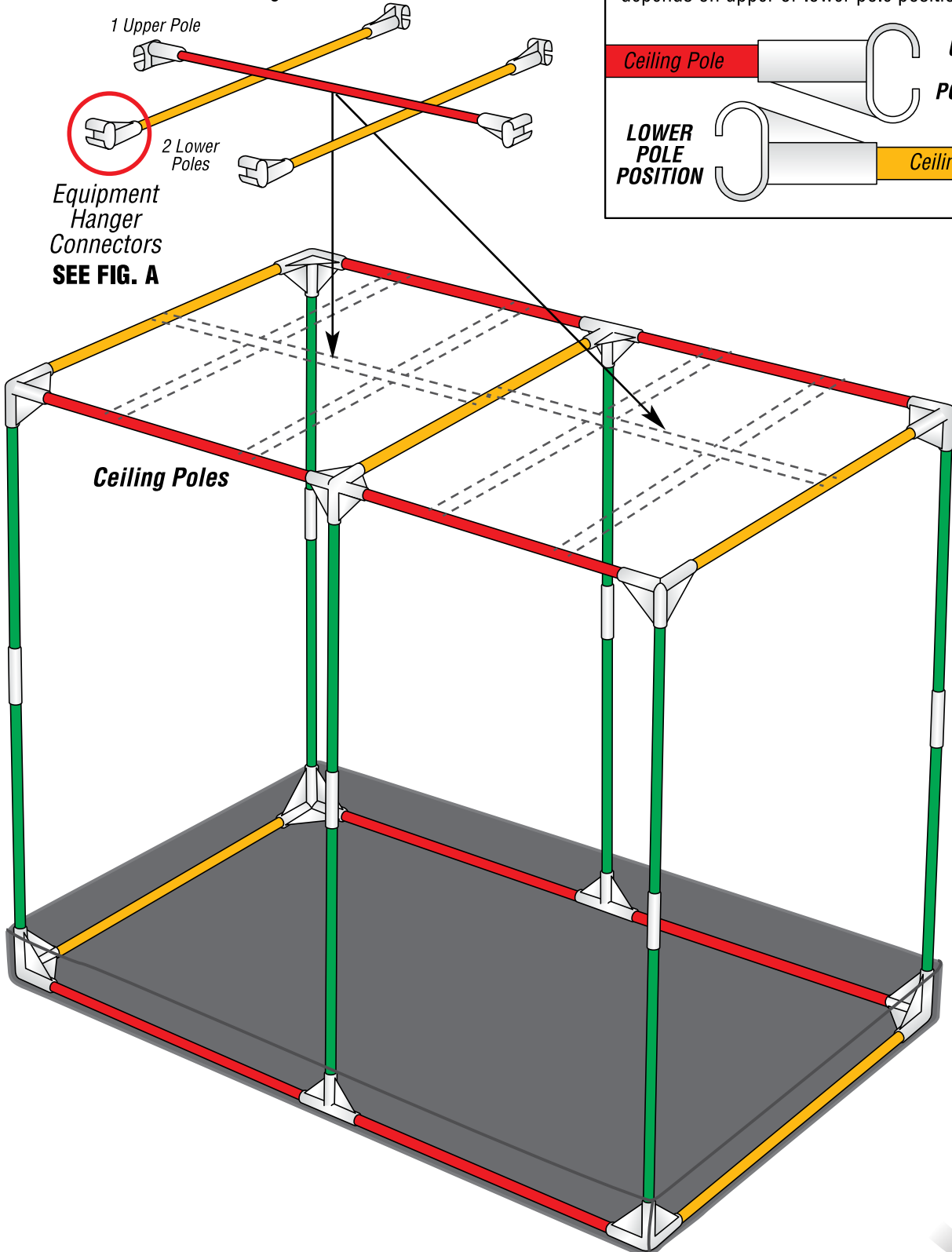
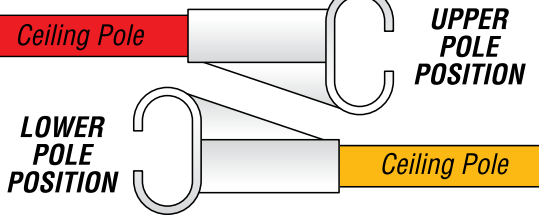
1 Upper Pole

2 Lower Poles

Equipment Hanger Connectors
SEE FIG. A

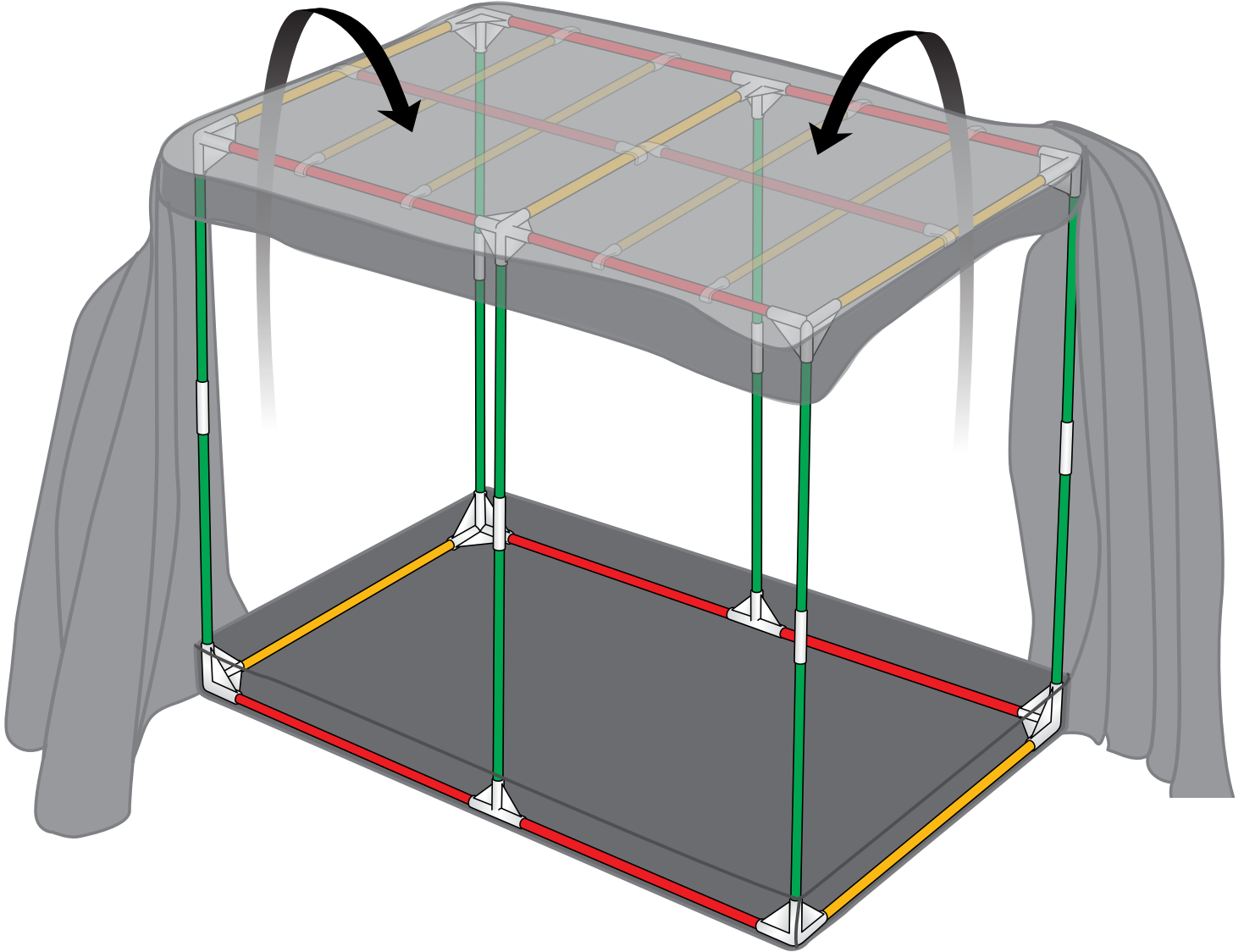
Fig. A

Orientation of Equipment Hanger Connectors depends on upper or lower pole position.



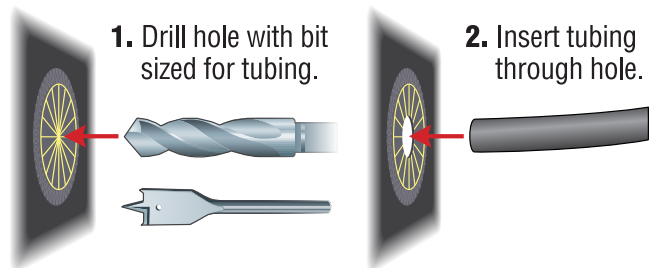
STEP 4

Carefully lift tent body and fit over completely assembled frame (2 people are recommended for this job – 1 person attempting to force the tent body over the frame could cause damage). After tent body is evenly placed, zip doors closed and make final adjustments to fit. Move equipment in and start growing!

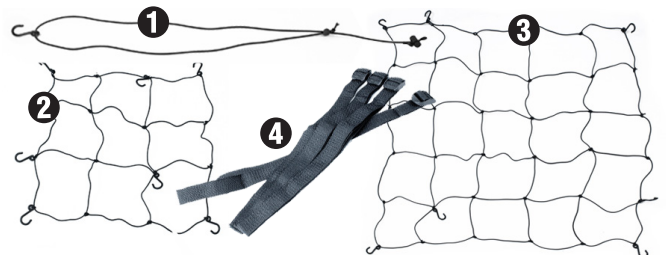


Sonic Welded Irrigation Line Access Ports:

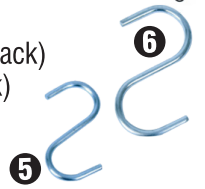
Located 3 per side, these reinforced, light-tight access ports allow reservoir and other plumbing to be placed outside grow tent.



OPTIONAL ACCESSORIES



1. #706590 Elastic Support (4/pack)
2. #706592 2' x 3.33' Elastic Trellis (1/pack)
3. #706594 4' x 5' Elastic Trellis (1/pack)
4. #706596 Support Strap (2/pack)
5. #706598 16mm S Hook (5/pack)
6. #706600 22mm S Hook (5/pack)



FRAME ASSEMBLY DIAGRAM

Not to exact scale – to show pole and connector placement only.



12 43.2" Wall Poles
1097.5mm

10 54.4" Floor & Ceiling Poles
1382mm

9 54" Floor & Ceiling Poles
1372mm

