

USHIO

MR-16 REFLECTOR LAMPS

SUPERLINE™ REFLEKTO™ SERIES



MR-16 ALUMINIZED REFLECTOR LAMPS FOR GENERAL LIGHTING

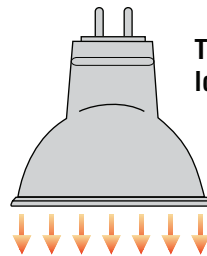
Superline™ Reflekt™ series of Halogen MR-16 lamps provide professional accent lighting through evenly distributed light. The multilense geometry of the reflector surface in conjunction with an axial, computer-aligned filament, uniformly illuminates any surface. There is no ring-shaped shadow and no black spot in the middle of the light pattern.

The Superline™ Reflekt™ combines an aluminum deposition and a high temperature colored coating on the reflector to prevent any back-spill of light and to reduce heat to the back of the lamp. The aluminized coating redirects heat through the front of the lamp, thus diminishing the risk of thermal damage to sockets, transformers, and ceilings. The Superline™ Reflekt™ is offered in three designer colors of matte black, silver and bronze — ideal for low voltage cable and track lighting.

Available in— 20W, 35W, and 50W, in
Flood and Narrow Flood beam spreads

FEATURES & BENEFITS

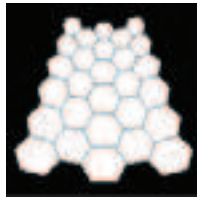
- No light diffusion from back-spill
- Reduced heat to socket, fixture and transformers
- 80% reduction of IR to the back of the lamp
- Decorative Aluminum coating in matte colors black, silver, and bronze
- Axial filament for precise beam control
- Dimmable
- Crisp white Halogen light
- UV-cut Halogen capsule



The aluminum coating of the reflector ensures lower heat radiation to the rear of the lamp.

Superline™ — Multilense Reflector

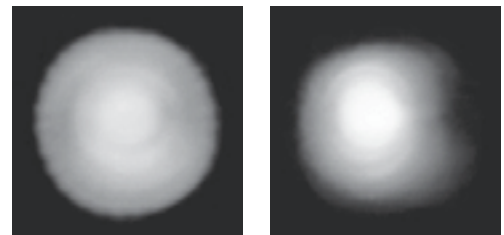
Reflector Surface: Optimized reflector design with hexagonal-shaped lenses



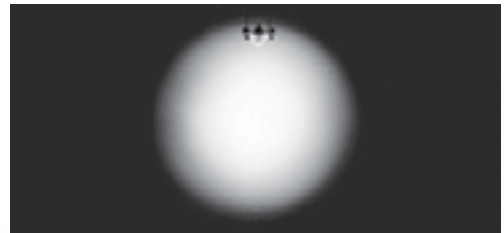
Reflector Cross Section: The hexagonal-shaped lenses provide total uniformity of light distribution



Standard Multimirror Reflectors



Superline — Multilense Reflector

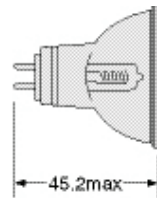
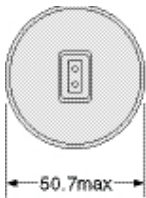
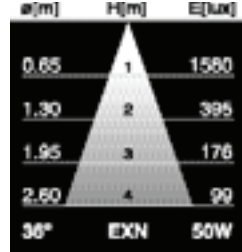
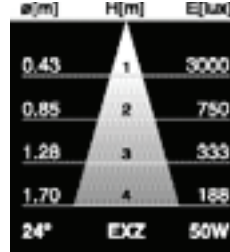
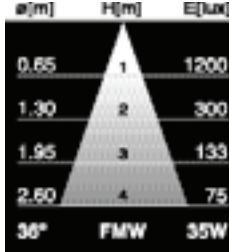
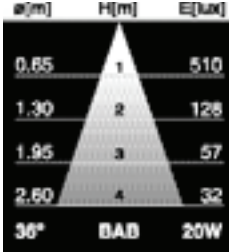


The geometry of the Multilense reflector together with an axial filament design, guarantees an absolute uniform appearance across the beam without unsightly shadows, dark spots or rings. (All photos: 20W, flood distribution, taken 1 meter from screen).

APPLICATIONS

- Accent lighting
- Restaurants
- Museums and galleries
- Shop windows, displays
- Track and cable lighting

SUPERLINE™ REFLEKTO™ MR-16 LAMPS



GU5.3

Dimensions are in millimeters

LAMP SOCKET

The model C-33U socket is rated up to 24V-7A for use with all low voltage USHIO GU5.3 based MR-16 lamps. The metal clips secure the lamp firmly into the socket. Use Ordering Code 1002142



Watts (W)	Ushio Ordering Code	Ushio Lamp Code	Voltage (V)	Color Temp (K)	Beam Angle	Beam Spread	Luminous Intensity (cd)	Reflector Color Coating	Avg Life (h)
20	1000005	BAB/B	12	2900	36°	Flood	510	Black	3500
20	1000007	BAB/B/FG	12	2900	36°	Flood	510	Black	3500
20	1000018	BAB/S	12	2900	36°	Flood	510	Silver	3500
20	1000019	BAB/S/FG	12	2900	36°	Flood	510	Silver	3500
35	1000554	FMV/B/FG	12	2950	24°	Narrow Flood	2000	Black	3500
35	1000567	FMW/B	12	2950	36°	Flood	1200	Black	3500
35	1000568	FMW/B/FG	12	2950	36°	Flood	1200	Black	3500
35	1003543	FMW/BZ/FG	12	2950	36°	Flood	1200	Bronze	3500
35	1000575	FMW/S	12	2950	36°	Flood	1200	Silver	3500
35	1000576	FMW/S/FG	12	2950	36°	Flood	1200	Silver	3500
50	1001652	EXZ/B	12	3000	24°	Narrow Flood	3000	Black	3500
50	1000425	EXZ/B/FG	12	3000	24°	Narrow Flood	3000	Black	3500
50	1003542	EXZ/BZ/FG	12	3000	24°	Narrow Flood	3000	Bronze	3500
50	1001653	EXZ/S	12	3000	24°	Narrow Flood	3000	Silver	3500
50	1000439	EXZ/S/FG	12	3000	24°	Narrow Flood	3000	Silver	3500
50	1000399	EXN/B	12	3000	36°	Flood	1580	Black	3500
50	1000400	EXN/B/FG	12	3000	36°	Flood	1580	Black	3500
50	1003541	EXN/BZ/FG	12	3000	36°	Flood	1580	Bronze	3500
50	1000407	EXN/S	12	3000	36°	Flood	1580	Silver	3500
50	1000408	EXN/S/FG	12	3000	36°	Flood	1580	Silver	3500



Superline™ Reflektó™ lamps are manufactured under ISO 9001 guidelines ensuring quality and security for the purchaser

Distributed by:

Form No. S-MR16SLR/R-1007: The specifications on this sheet supercede all previously published specifications and may be subject to change for design and specification improvement without prior notice.