



**GENERAL
HYDROPONICS®**

FloraNova®

One-Part Nutrient

FloraNova® Grow

Stimulates Vigorous Roots, Stems & Foliage.

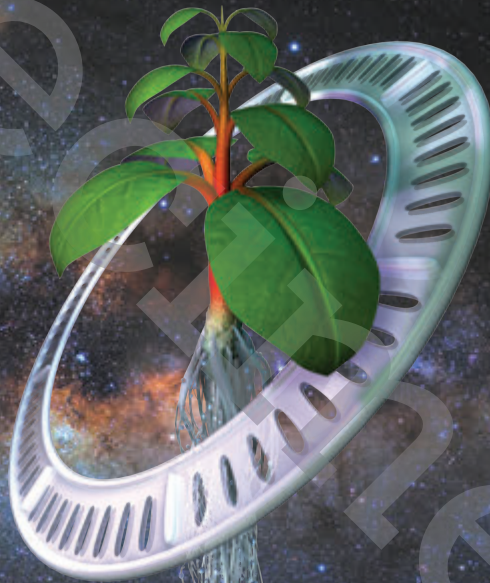
- Superb for Hydroponic and Soil Cultivation
 - Super Concentrated & pH stabilized
 - Outstanding for all kinds of plants
- Use from seedling through structural growth phases
(When flowers appear switch to FloraNova Bloom)

FloraNova represents a breakthrough in fertilizer technology. Combining the strength of a dry concentrate & consistency of a liquid. This unique formulation of highly purified minerals, plus natural additives combine the best of both the hydroponic and natural gardening methods.

All elements required for hydroponic cultivation are combined together in this unique one part formulation.

FloraNova is extremely concentrated. A very small amount of FloraNova mixed with fresh water will provide your plants with proper nutrition. For hydroponics, soilless mixtures, potted plants in soil or for your garden grown plants.

Use for all types of plants from early flowering through harvest.



Quantity	ppm (NaCl)	EC mS	Application
.625 ml / L 1/2 tsp / gal	300	.7	Seedlings, Orchids & African Violets
1.25 ml / L 1 tsp / gal	600	1.3	Most plants during early growth
2.5 ml / L 2 tsp / gal	1200	2.4	Most plants during later growth
3.75 ml / L 3 tsp / gal	1750	3.5	Max strength for rapidly growing plants

All measurements are approximate in pure water

These values are intended to be used without supplements. When using supplements, please refer to genhydro.com for complete Feed Programs.

For Best Results:

- Use a conductivity or ppm meter to monitor water quality and control nutrient strength. Drain, discard and replace nutrient every week or two to prevent nutrient imbalance.
- Maintain nutrient pH between 5.0 and 6.5. Adjustment may be necessary since water quality and pH vary both regionally and seasonally.

Grow

**7 - 4 - 10
GUARANTEED ANALYSIS**

Total Nitrogen (N).....	7.0%
0.9% Ammoniacal Nitrogen	
6.1% Nitrate Nitrogen	
Available Phosphate (P ₂ O ₅).....	4.0%
Soluble Potash (K ₂ O).....	10.0%
Calcium (Ca).....	4.0%
Magnesium (Mg).....	1.5%
1.5% Water Soluble Magnesium (Mg)	
Sulfur (S).....	2.0%
2.0% Combined Sulfur (S)	
Boron (B).....	0.01%
Chlorine (Cl).....	0.01%
Cobalt (Co).....	0.002%
Copper (Cu).....	0.01%
0.01% Chelated Copper (Cu)	
Iron (Fe).....	0.1%
0.1% Chelated Iron (Fe)	
Manganese (Mn).....	0.03%
0.03% Chelated Manganese (Mn)	
Molybdenum (Mo).....	0.003%
Zinc (Zn).....	0.02%
0.02% Chelated Zinc (Zn)	
Derived from: Ammonium Molybdate, Ammonium Phosphate, Calcium Nitrate, Cobalt Sulfate, Copper EDTA, Iron DTPA, Iron EDTA, Magnesium Sulfate, Manganese EDTA, Potassium Borate, Potassium Nitrate, Potassium Phosphate, and Zinc EDTA.	

WARNING: This product contains molybdenum (Mo). Crops high in molybdenum can be toxic to ruminant animals. Use only according to manufacturer's directions.

Information regarding the contents and levels of metals in this product is available on the internet at <http://www.aapfco.org/metals.htm> F-1109

STIR OR SHAKE WELL BEFORE USING

PROTECT FROM FREEZING & DIRECT SUNLIGHT

KEEP OUT OF REACH OF CHILDREN

STORE IN A COOL DARK PLACE

7-4-10

946 ml (1 QUART)



GH

genhydro.com

Manufactured by GH Inc.,
P.O. Box 1576 Sebastopol, CA 95473, USA



©2010 GH Inc Patent Pending