

DATA SHEET

TEST-36 / TEST-74 Mounting base – article number B6639 / W4507

Product characteristics

The aluminum mounting base is made of high quality, double anodized aluminum dedicated for surface mounting of the STOS extrusion. We offer two versions of the base, low TEST-36 (base + extrusion – make the complete fixture higher by 3.6 mm) and taller version TEST-74 (base + extrusion – make the complete fixture higher by 7.4 mm).

The STOS extrusion is mounted into the mounting base by using special plastic clips (we recommend a pair of clips every 20 cm).

After the extrusion is mounted into the base we gain a space that can be used for hiding power cables.

Additional accessories for the mounting base are standard or metallic polypropylene end caps. In order to mount the base directly to a surface, regular screws can be used which are available on the market.

Additionally, the mounting base together with the STOS extrusion can be suspended with the use of elements from the mounting system which, together with the optional accessories are presented on www.KlusDesign.com.

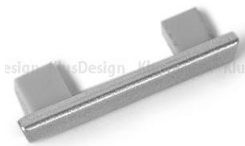
Applications

Aluminum mounting base that enables surface mounting of the STOS extrusion. It makes mounting the STOS extrusion quick and easy and additionally we gain space for power cables.

Products related to the Extrusion



extrusion STOS (B4369)



end cap TEST-36 (24040)
TETRA-36 MET (24055)



end cap TEST-74 (24039)
TEST-74 MET (24054)



TEKNIK clip
(24003)

Technical specification

Available lengths

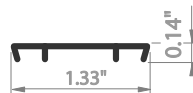
1 m / 2 m (can be cut to any size)

Material

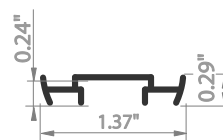
*available by arrangement with the sales department of KLUS

body – aluminum, end cap – polypropylene (PP),

clip – polyoxymethylene (POM)



TEST-36



TEST-74

**sample item from the mounting system of profiles