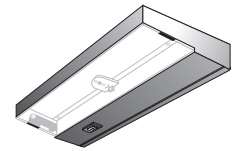
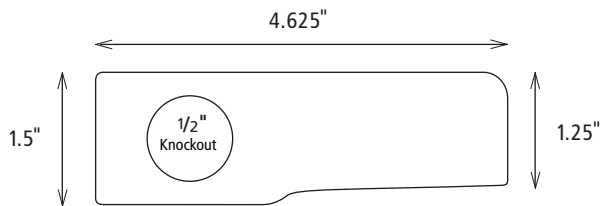


LED TASK STAR

DIMMABLE!



SCHEMATICS:



9"	LTS-1-XX/YY	One LED Module LED Task Star
17.5"	LTS-2-XX/YY	Two LED Module LED Task Star
26"	LTS-3-XX/YY	Three LED Module LED Task Star
34.5"	LTS-4-XX/YY	Four LED Module LED Task Star
38.5"	LTS-5-XX/YY	Five LED Module LED Task Star

DESCRIPTION:

Completely self-contained under counter light fixture with replaceable 120VDC LED Modules included. Dimmable. Twice the light output as Xenon/Halogen technology with 72% energy savings. 120VAC in and out up to 150 replaceable LED Modules per 15A tap. Numerous contractor preferred 1/2" knockouts in each fixture. Offered in five sizes and four fixture finishes. UL Listed Damp Location.

APPLICATIONS

- ▶ Under-cabinet task light
- ▶ Work stations
- ▶ Over-cabinet accent light
- ▶ Laboratories
- ▶ Display cases and exhibits
- ▶ Merchandising
- ▶ Indirect accent light
- ▶ Wall units and bars

FEATURES

- Replaceable 120VDC LED Modules
- Twice the light output of Xenon/Halogen technology
- Pleasingly warm color temperature of 3100K
- Dimmable
- Captive screw mounting
- Energy usage from 5.2 to 26.0 watts per fixture
- Maximum of 150 LED Modules per 120VAC, 15AMP circuit
- New low-profile lens release
- Light, efficient aluminum frame stamped for 120V hard wire input
- Available in 4 colors: Aluminum, Black, Bronze, and White
- Available in five fixture lengths
- Numerous 1/2" knockouts
- Long life rectifier included. No integral LED driver required
- 120VAC in and out of fixture
- Uses standard household Romex™ wire input/output
- Push-in connectors included for ease of power input



Suitable for
• Indoor and Damp Locations

ORDERING LOGIC:

LTS-Z-XX/YY

Z = NUMBER OF LED MODULES

1, 2, 3, 4, 5

XX = TYPE

HW = Hard Wire

YY = FIXTURE FINISH

WH = White

BZ = Bronze

BK = Black

AL = Aluminum

SPECIFICATIONS:

Voltage
Energy Usage
LED Color Temperature
LED Module Life
Fixture Finish
Construction
Lens

120VAC input
1 module = 5.2 watts, 2 module = 10.4 watts, 3 module = 15.6 watts, 4 module = 20.8 watts, 5 module = 26 watts
3100K +/- 200K
Replaceable 120VDC LED Module rated at 40,000 hours
White or black powder coating; bronze, or natural aluminum
Aluminum extruded frame with injection molded ends for low fixture weight and consistency of finish.
Frosted glass for even light distribution. Hinged to aluminum frame for ease of fixture installation and security.
Low-profile lens release.
Hardwire can be parallel wired ("daisy chained") up to 150 LED Modules.
Dimmable. See instructions for details.
UL listed and labeled. Damp location.
Three years. See website for details.

Wiring Options
Dimming
Agency Approval
Warranty

PROJECT:

TYPE:

NOTES: