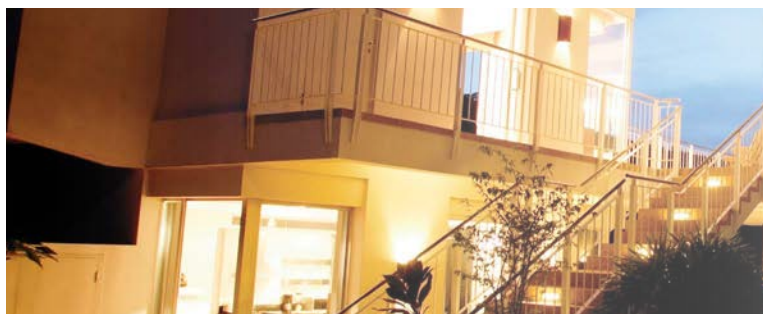


# brighten



The bright white radiance of the GE energy smart® LED commercial indoor/outdoor PAR38 lamps isn't just something you see, it's something you feel.

## GE energy smart® LED commercial indoor/outdoor PAR38 lamps

For indoor and outdoor applications, GE offers an energy smart® dimmable 20-watt LED PAR38 lamp with a high light output.

### LOW-COST OPERATION

- Using only 20 watts of energy, save over \$302 in energy costs over the rated life of the lamp versus a standard 75-watt halogen lamp based on \$0.11 per kWh
- Energy efficiency and long life mean fewer lamp replacements versus standard incandescent and halogen light sources
- Ideal for both indoor and outdoor applications
- UL wet rated for outdoor applications

### EXCELLENT COLOR RENDERING

- Available with a CRI of 80 to 82

### COLOR TEMPERATURE

- Halogen-like color
- Available in 2700K, 3000K and 4000K

### LONG LIFE

- Up to 50,000 hours rated life (L70)

### DIMMABLE

- Dims from 100% to 10%

### BEAM PATTERNS

- Available in 12°, 15°, 25°, 35° and 40° beam patterns

### ENVIRONMENTALLY CONSCIOUS

- These lamps are energy efficient, contain no lead or mercury, and are compliant with material restriction requirements of RoHS

### GE QUALITY AND RELIABILITY

- 3-year limited warranty

To learn more about saving money and energy, go to: [gelighting.com/ThinkLED](http://gelighting.com/ThinkLED)

When you Think LED lighting, Think GE.

ecomagination<sup>SM</sup>



imagination at work

PERFORMANCE DATA

GE energy smart® LED commercial indoor/outdoor PAR38 lamps

BULB SHAPE	BASE TYPE	WATTS	ORDER CODE	DESCRIPTION	VOLTS	CASE QTY**	MOL (IN)	LUMENS INITIAL	CBCP	INITIAL COLOR TEMP	CRI	+RATED LIFE (YRS) 3HRS/DAY	*RATED LIFE (HRS)	ESTIMATED ENERGY COST/YR	ENERGY STAR® STATUS	ADDITIONAL INFORMATION
<b>Commercial PAR38 - Dimming (Indoor/Outdoor)</b>																
PAR38	MED	12	66111	LED12DP38S830/12	120	6	5.31	700	10000	3000	82	22.8	25,000	\$1.45	★	Spot, 12° Beam, Silver
			66112	LED12DP38S830/25	120	6	5.31	700	3300	3000	82	22.8	25,000	\$1.45	★	Narrow Flood, 25° Beam, Silver
			66113	LED12DP38S830/35	120	6	5.31	700	1500	3000	82	22.8	25,000	\$1.45	★	Flood, 35° Beam, Silver
			66529	LED12DP38/FL/TP	120	3	5.31	700	1500	3000	82	22.8	25,000	\$1.45	★	Flood, 35° Beam, Silver
			66114	LED12DP38S827/12	120	6	5.31	660	10000	2700	82	22.8	25,000	\$1.45	★	Spot, 12° Beam, Silver
			66115	LED12DP38S827/25	120	6	5.31	660	3300	2700	82	22.8	25,000	\$1.45	★	Narrow Flood, 25° Beam, Silver
			66116	LED12DP38S827/35	120	6	5.31	660	1500	2700	82	22.8	25,000	\$1.45	★	Flood, 35° Beam, White
		20	64827	LED20DP38S830/15	120	6	5.31	1100	9000	3000	80	45.7	50,000	\$2.41	★	Spot, 15° Beam, Black
			64391	LED20DP38S830/25	120	6	5.31	1100	4000	3000	80	45.7	50,000	\$2.41	★	Narrow Flood, 25° Beam, Silver
			64392	LED20DP38S830/40	120	6	5.31	1100	1800	3000	80	45.7	50,000	\$2.41	★	Flood, 40° Beam, Silver
			64828	LED20DP38S827/15	120	6	5.31	1000	8500	2700	80	45.7	50,000	\$2.41	★	Spot, 15° Beam, Silver
			64829	LED20DP38S827/40	120	6	5.31	1000	3700	2700	80	45.7	50,000	\$2.41	★	Narrow Flood, 25° Beam, Silver
			64830	LED20DP38S827/40	120	6	5.31	1000	1700	2700	80	45.7	50,000	\$2.41	★	Flood, 40° Beam, Silver
			65847	LED20DP38/FL/TP	120	3	5.31	1000	1700	2700	80	22.8	25,000	\$2.41	★	Flood, 40° Beam, Silver
			66326	LED20DP38S840/15	120	6	5.31	1250	10000	4000	80	22.8	25,000	\$2.41	★	Spot, 15° Beam, Silver
			66327	LED20DP38S840/25	120	6	5.31	1250	5500	4000	80	22.8	25,000	\$2.41	★	Narrow Flood, 25° Beam, Silver
			66328	LED20DP38S840/40	120	6	5.31	1250	2300	4000	80	22.8	25,000	\$2.41	★	Flood, 40° Beam, Silver
			68194	LED20DP38V830/12	120	6	5.31	1100	9000	3000	80	22.8	25,000	\$2.41	★	Spot, 12° Beam, Silver
			68195	LED20DP38V830/25	120	6	5.31	1100	4000	3000	80	22.8	25,000	\$2.41	★	Narrow Flood, 25° Beam, Silver
			68196	LED20DP38V830/40	120	6	5.31	1100	1800	3000	80	22.8	25,000	\$2.41	★	Flood, 40° Beam, Silver
			68197	LED20DP38V827/12	120	6	5.31	1000	8500	2700	80	22.8	25,000	\$2.41	★	Spot, 12° Beam, Silver
			68198	LED20DP38V827/25	120	6	5.31	1000	3700	2700	80	22.8	25,000	\$2.41	★	Narrow Flood, 25° Beam, Silver
			68199	LED20DP38V827/40	120	6	5.31	1000	1700	2700	80	22.8	25,000	\$2.41	★	Flood, 40° Beam, Silver
			68200	LED20DP38V840/12	120	6	5.31	1250	10000	4000	80	22.8	25,000	\$2.41	★	Spot, 12° Beam, Silver
			68201	LED20DP38V840/25	120	6	5.31	1250	5500	4000	80	22.8	25,000	\$2.41	★	Narrow Flood, 25° Beam, Silver
			68202	LED20DP38V840/40	120	6	5.31	1250	2300	4000	80	22.8	25,000	\$2.41	★	Flood, 40° Beam, Silver
		26	68183	LED26DP38S830/12	120	6	5.31	1500	24000	3000	82	22.8	25,000	\$3.12	★	Spot, 12° beam, Silver
			68184	LED26DP38S830/25	120	6	5.31	1500	6800	3000	82	22.8	25,000	\$3.13	★	Narrow Flood, 25° beam, Silver
			68185	LED26DP38S830/40	120	6	5.31	1500	3100	3000	82	22.8	25,000	\$3.13	★	Flood, 40° beam, Silver
			68182	LED26DP38S840/40	120	6	5.31	1650	3200	4000	82	22.8	25,000	\$3.13	★	Flood, 40° beam, Silver
			68181	LED26DP38S-FL/TP	120	6	5.31	1650	3200	4000	82	22.8	25,000	\$3.13	★	Flood, 40° beam, Silver
<b>Commercial PAR38 - Non-Dimming (Indoor/Outdoor)</b>																
PAR38	MED	20	61927	LED20P38S/FL	120	3	5.31	1050	1300	3000	80	22.8	25,000	\$2.41	★	Flood, 40° Beam, Silver
			61928	LED20P38S830/40	120	6	5.31	1050	1300	3000	80	45.7	50,000	\$2.41	★	Flood, 40° Beam, Silver
			61929	LED20P38S830/25	120	6	5.31	1050	1300	3000	80	45.7	50,000	\$2.41	★	Narrow Flood, 25° Beam, Silver

For additional product and application information, please consult GE's website: [gelighting.com/ThinkLED](http://gelighting.com/ThinkLED)

- \* The life rating is based on the hours of operation the lamp will provide before reaching 70% of its original lumen rating (L70)
- \*\* Minimum order quantity = 6
- ★ ENERGY STAR® qualified
- ^ Estimated energy cost per year based on \$0.11 per kWh energy rate and 3 operating hours per day  
Note: Product descriptions ending in "TP" indicate a card blister or clamshell package nested in a tray for shelf display.  
Cards also designed for hook display.

ecomagination<sup>SM</sup>



Product is compliant with material restriction requirements of RoHS

Information provided is subject to change without notice. Please verify all details with GE. All values are design or typical values when measured under laboratory conditions, and GE makes no warranty or guarantee, expressed or implied, that such performance will be obtained under end-use conditions.

energy smart® is a registered trademark of GE  
ENERGY STAR® and the ENERGY STAR® logo are registered U.S. marks  
© 2012 GE 63555 12/06/2012 Printed in USA