

# GE Protected Metal Halide Lamps

Suitable for use in Open Luminaires and are marked with the /O Luminaire Code as specified in ANSI C78.380, High-intensity Discharge Lamps, Method of Designation.

Available in Ceramic Metal Halide, MXR and MPR

Designed to meet the containment test specified in ANSI C78.389

Intended primarily for use in open luminaires but may also be operated in enclosed luminaires.

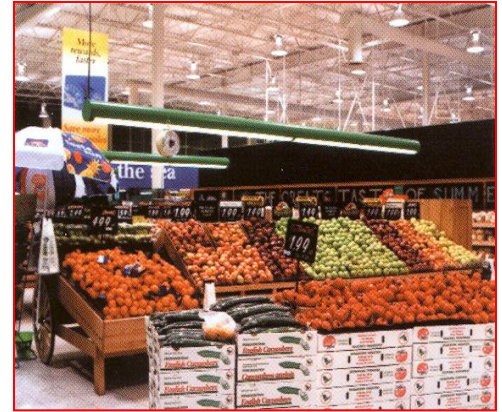
MPR lamps employ a quartz shroud that surrounds the arc tube to reduce the potential risk to persons and property in the unlikely case of an arc tube rupture.

GE's protected Ceramic Metal Halide and Quartz MPR lamps are equipped with an EX39 exclusionary base:

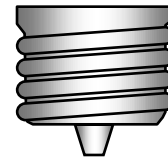
GE's EX39 based lamps are fully compatible for new and renovated Metal Halide installations that fall under the jurisdiction of the 2005 and later National Electric Code (NEC). For more information on the 2005 NEC requirements and implications for certain metal halide lamps refer to the guidelines in NEMA LSD25 and NEMA LSD31.

GE MXR protected metal halide lamps employ E26 medium bases:

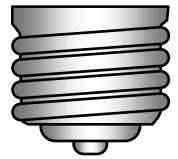
GE's MXR protected lamps are designed with a narrow neck ED17 bulb that have a *maximum* neck diameter of 31.5mm (~1.24") and can be distinguished from GE's enclosed-rated MXR lamps which uses a BD17 bulb that have a *minimum* neck diameter of 34mm (~1.34"). GE's MXR protected MH lamps are in compliance with ANSI standard C78.43 for single-ended MH lamps.



EX39 Base

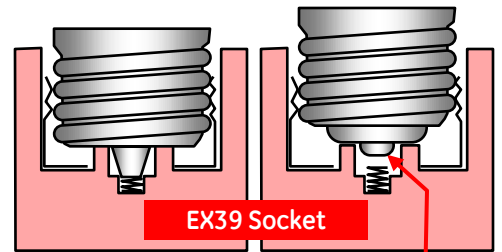


E39 Base



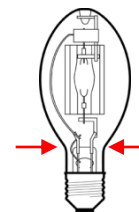
The EX39 base has an extended center terminal that can reach the center contact of an EX39 socket.

Standard E39 mogul base



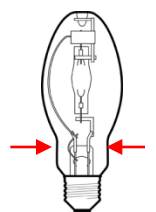
Additional ceramic material around the center contact keeps standard E39 mogul base from seating and making contact.

ED17 Med



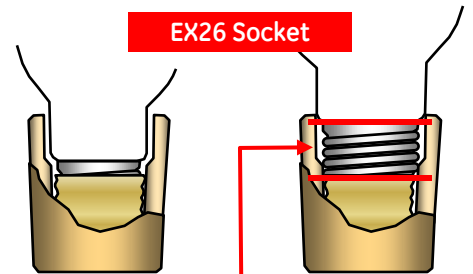
Open-rated ED17 lamps have a max. bulb neck diameter of 31.5mm (~1.24")

BD17 Med



Enclosed-rated BD17 lamps have a min. bulb neck diam. of 31mm (~1.34")

EX26 Socket



Additional / extended insulator height on "exclusionary" socket keeps BD17 lamp from seating



