

Diva® 250 W C•L® Dimmer

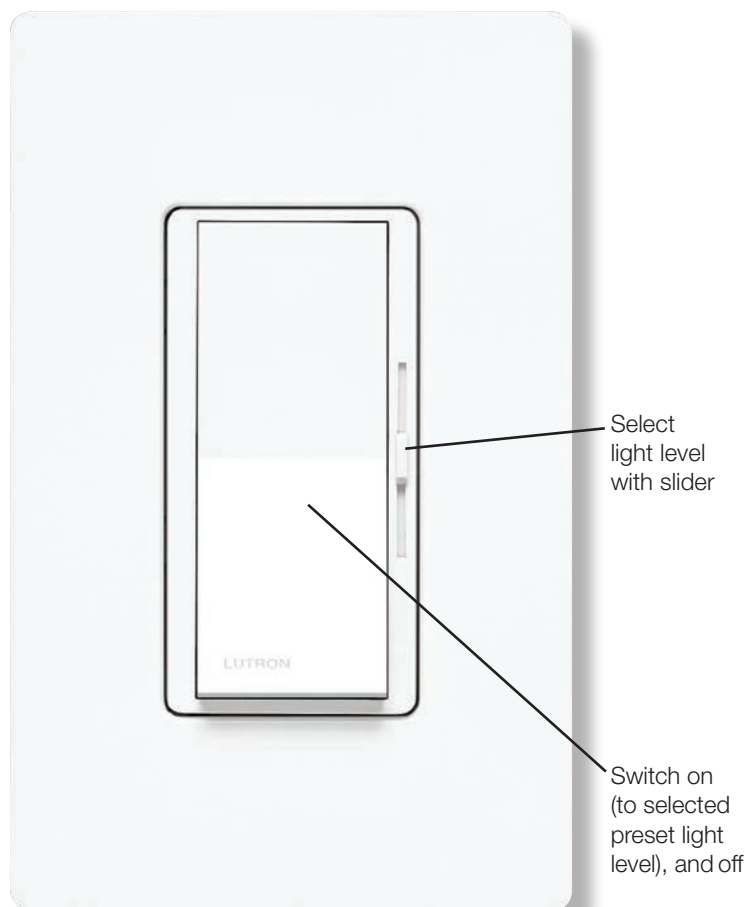
Dimmer for CFL, LED, Halogen, and Incandescent dimmable bulbs.

Features

- Large paddle switch with a captive linear-slide dimmer for a standard designer wallplate opening
- HED™ Technology: Advanced Lutron® dimming circuitry designed for compatibility with most high efficacy light bulbs
- UL® Listed to control:
 - Dimmable compact fluorescent (CFL) with integrated ballast
 - Dimmable LED with integrated driver
 - Lutron Hi-lume® A-Series LTE LED Driver
 - Halogen
 - Incandescent
- Low-end adjustment to accommodate a wide range of bulbs
- 100% factory tested
- NEMA SSL-7A Type 2 Compliant

Application Requirements

- **When dimming CFLs or LEDs, only bulbs marked or rated as DIMMABLE may be used.**
- For a list of compatible DIMMABLE CFLs and LEDs please visit www.lutron.com/dimcflled. For questions call 1.800.523.9466.
- Some DIMMABLE CFLs and LEDs require a minimum number of bulbs for proper operation. For details and a list of bulbs, please visit www.lutron.com/dimcflled.



* Wallplate sold separately

Model Numbers

DVCL-253P-XX¹ Gloss Finish, Single pole/3-way²

DVSCCL-253P-XX¹ Satin Colors®, Single pole/3-way²

¹ “XX” in the model number represents color/finish code; see “Colors and Finishes” on Page 3.

² For 3-way and 4-way switching, use Claro® switches or other mechanical switches.

| | |
|--------------------|-----------------------|
| Job Name: | Model Numbers: |
| Job Number: | |

Specifications

Regulatory Approvals

- UL® Listed to US and Canadian safety requirements
UL1472 / CSA C22.2 184.1
- NEMA SSL-7A Type 2

Power and Ratings

- 120 V~ 60 Hz
- 250 W dimmable CFL/LED
- or**
- 600 W Incandescent/Halogen
- or**
- Mixed bulb type per **Multigang and Mixed Bulb Type Ratings** table
- 350W Lutron® Hi-lume® A series LTE LED Driver
(maximum 8 drivers)

Environment

- For indoor use only.
- Ambient operating temperature: 32 °F to 104 °F
(0 °C to 40 °C), 0% - 90% humidity

Performance

- Power failure memory: should power be interrupted, the control will return to its previously set level prior to the interruption when power is restored.
- Captive linear slider
- Tested to withstand electrostatic discharge without damage or memory loss, in accordance with IEC 61000-4-2.
- Precise color matching
- Mechanical air-gap switch to disconnect load power

Warranty

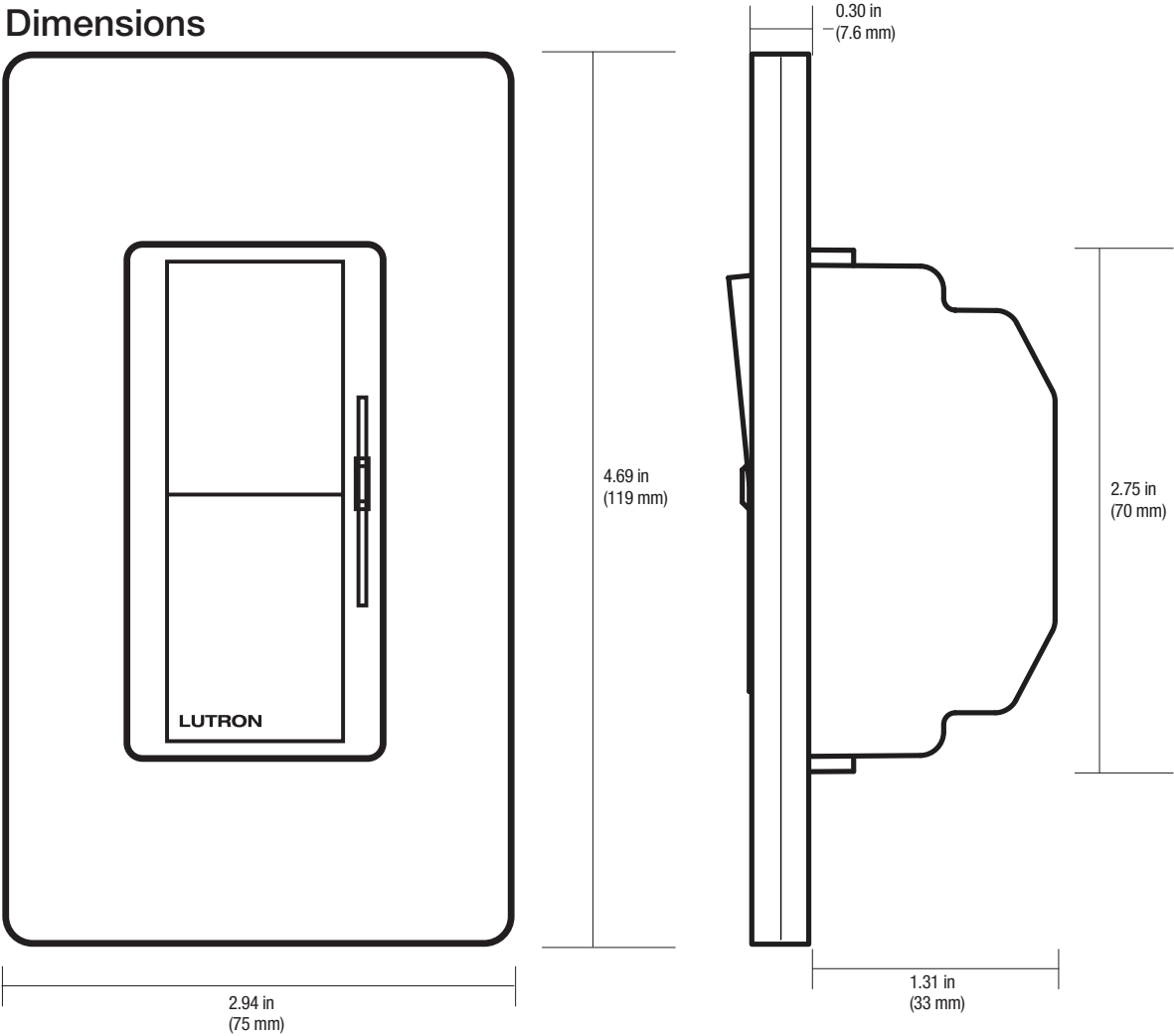
- 1 Year Limited Warranty
For additional Warranty information, please visit
http://www.lutron.com/TechnicalDocumentLibrary/369-119_Wallbox_Warranty.pdf

Job Name:

Model Numbers:

Job Number:

Dimensions



Note: Requires a U.S. wallbox 2½ in (64 mm) deep minimum.

Colors and Finishes

Gloss Finishes

Add color/finish code to model #

Example: DVCL-253P-WH

| | |
|----|--------------|
| WH | White |
| IV | Ivory |
| AL | Almond |
| LA | Light Almond |
| GR | Gray |
| BR | Brown |
| BL | Black |

Satin Colors®

Add color/finish code to model #

Example: DVSCCL-253P-SW

| | |
|----|--------------|
| HT | Hot |
| MR | Merlot |
| PL | Plum |
| TQ | Turquoise |
| SG | Sea Glass |
| TP | Taupe |
| ES | Eggshell |
| BI | Biscuit |
| SW | Snow |
| PD | Palladium |
| MN | Midnight |
| TC | Terracotta |
| SI | Sienna |
| GB | Green Briar |
| BG | Bluestone |
| MS | Mocha Stone |
| GS | Goldstone |
| DS | Desert Stone |
| ST | Stone |
| LS | Limestone |

| | |
|-------------|----------------|
| Job Name: | Model Numbers: |
| Job Number: | |

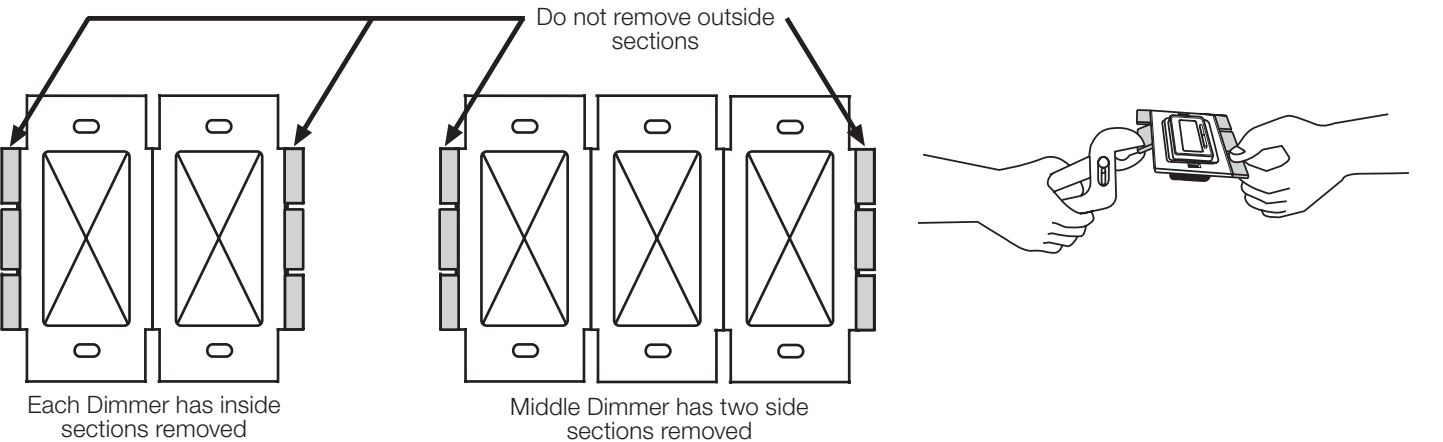
Multigang and Mixed-Bulb-Type Ratings

When installing more than one Dimmer in the same wallbox, it may be necessary to remove some side sections prior to wiring (**see diagram**). Removal of Dimmer side sections may reduce maximum wattage, as shown in the chart below.

Mixing bulb types (**using a combination of CFL/LED, and Incandescent/Halogen bulbs**) will also affect the maximum ratings, as shown in the chart below.

Note: Lutron® Hi-lume® A-Series LTE LED loads cannot be mixed with other loads.

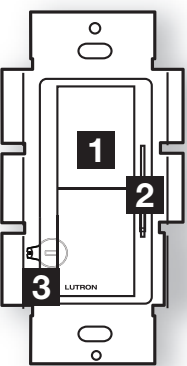
*EXAMPLE: If one set of side sections is removed and you have eight 9 W LED bulbs installed (Total LED Wattage = 72 W), you may add up to 300 W of incandescent or halogen lighting.



| | | <div><div></div><div></div><div></div></div> | | |
|---|-------------|--|-----------------------------|------------------------------|
| <div>Total CFL/LED Wattage Installed</div> <div>(Wattage per bulb x # of bulbs)</div> | <div></div> | Maximum Allowable Incandescent/Halogen Wattage <div></div> | | |
| | | <div>A No sides removed</div> | <div>B 1 side removed</div> | <div>C 2 sides removed</div> |
| 0 W | + | 600 W | 500 W | 400 W |
| 1 W – 40 W | + | 500 W | 400 W | 300 W |
| 41 W – 80 W | + | 400 W | 300 W | 200 W |
| 81 W – 120 W | + | 300 W | 200 W | 100 W |
| 121 W – 160 W | + | 200 W | 100 W | 50 W |
| 161 W – 200 W | + | 100 W | 50 W | 0 W |
| 201 W – 250 W | + | 0 W | 0 W | 0 W |

Note: There is no wattage reduction when controlling only LED or CFL

Operation (View with wallplate removed)



1 Switch
Turns lights ON and OFF.

2 Slider
Controls light level.

+ Up
Increases light level

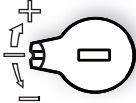
- Down
Decreases light level

IMPORTANT: Set slider to bottom before adjusting dimming range.

Lever-type Adjustment Dial

3 Adjustment lever
Sets low end dimming limit.

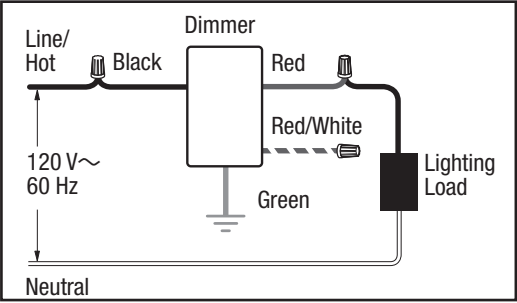
Up (clockwise)
Increases brightness



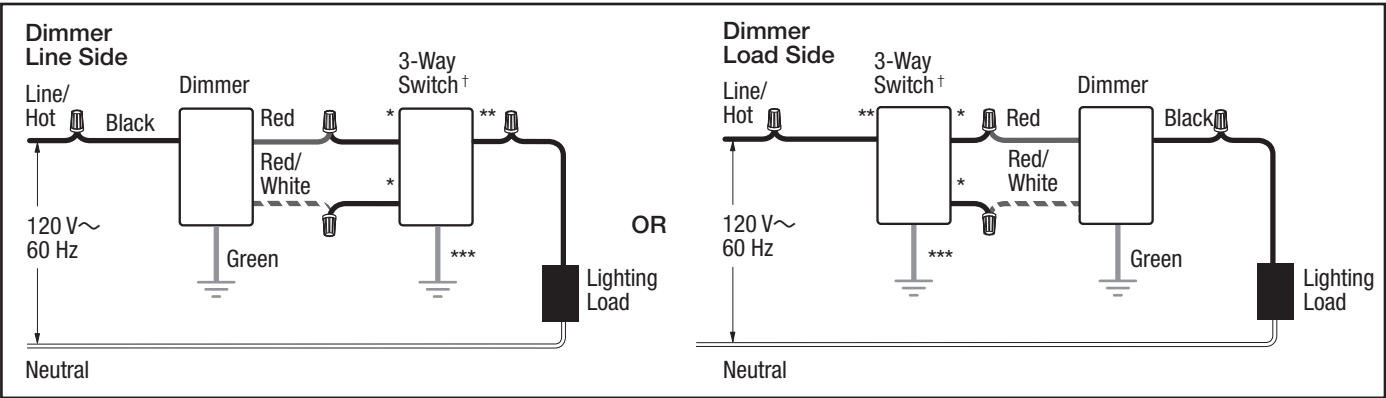
Down (counter-clockwise)
Decreases brightness

Wiring Diagrams

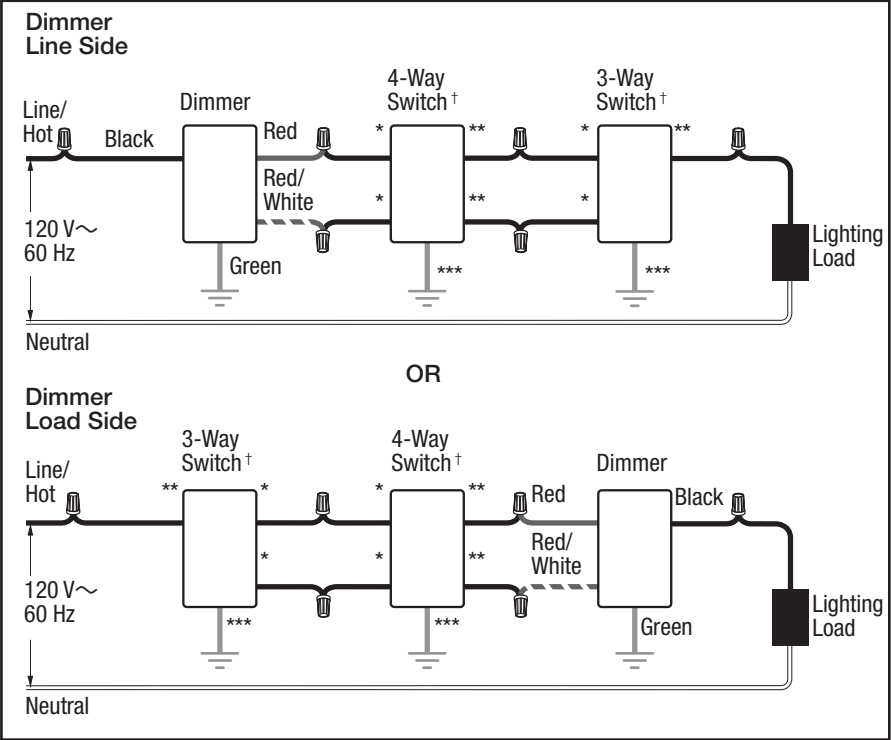
Single-Pole Wiring



3-Way Wiring



4-Way Wiring



- * Copper/Black screw terminal
- ** Brass/Gold screw terminal
- *** Green screw terminal
- † Please refer to switch instruction sheet for proper wiring.

Note for 4-Way Wiring:
Dimmer must be installed Line Side or Load Side. It cannot be installed in the 4-way location.