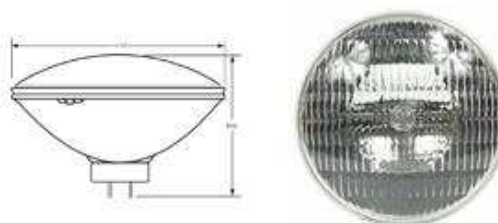


49889 – 200PAR56/MFL

GE Soft White PAR56 - Medium Flood

**GENERAL CHARACTERISTICS**

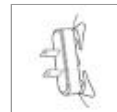
| | |
|---------------------|----------------------------|
| Lamp type | Sealed Beam - PAR |
| Bulb | PAR56 |
| Base | Mogul End Prong (GX16d) |
| Filament | CC-13 |
| Product Technology | Incandescent |
| Wattage | 200 |
| Voltage | 120 |
| Rated Life | 2000 hrs |
| Primary Application | Medium Flood |



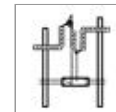
Bulb



Base



Filament

[View Larger](#)**PHOTOMETRIC CHARACTERISTICS**

| | |
|------------------------------------|------------------------|
| Initial Lumens | 2270 |
| Beam Spread - Horizontal | 34° - 10 %, 22° - 50 % |
| Beam Spread - Vertical | 22° - 10 %, 13° - 50 % |
| Center Beam Candlepower (CBCP) | 15000 |
| Color Temperature | 2750 K |
| Nominal Initial Lumens per Watt | 11 |

ADDITIONAL RESOURCES[Catalogs](#)[Disposal Policies & Recycling Information](#)**DIMENSIONS**

| | |
|---------------------------------|---------------------|
| Maximum Overall Length (MOL) | 5.0000 in (127 mm) |
| Bulb Diameter (DIA) | 7.000 in (177.8 mm) |

PRODUCT INFORMATION

| | |
|-------------------------------------|----------------|
| Product Code | 49889 |
| Description | 200PAR56/MFL |
| Standard Package | Case |
| Standard Package GTIN | 10043168498897 |
| Standard Package Quantity | 12 |
| Sales Unit | Unit |
| No Of Items Per Sales Unit | 1 |
| No Of Items Per Standard Package | 12 |
| UPC | 043168498890 |

⚠ CAUTIONS & WARNINGS[See list of cautions & warnings.](#)**NOTES**

- For use with heat-resistant connector supported by bulb rim or metal shell of base.
- Lamp is made of heat resistant glass (HRG).