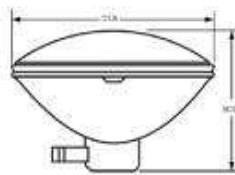


**20140 – 200PAR46/3MFL**

GE PAR46 - Medium Flood

**GENERAL CHARACTERISTICS**

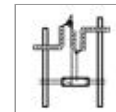
Lamp type	Sealed Beam - PAR
Bulb	PAR46
Base	Medium Side Prong
Filament	CC-13
Product Technology	Incandescent
Wattage	200
Voltage	130
Rated Life	2000 hrs
Primary Application	Medium Flood



Bulb



Filament

[View Larger](#)**PHOTOMETRIC CHARACTERISTICS**

Initial Lumens	2270
Beam Spread - Horizontal	40° - 10 %, 27° - 50 %
Beam Spread - Vertical	24° - 10 %, 13° - 50 %
Center Beam Candlepower (CBCP)	11500
Color Temperature	2750 K
Nominal Initial Lumens per Watt	11

**ADDITIONAL RESOURCES**[Catalogs](#)[Disposal Policies & Recycling Information](#)**DIMENSIONS**

Maximum Overall Length (MOL)	4.0000 in (101.6 mm)
Bulb Diameter (DIA)	5.750 in (146.0 mm)

**PRODUCT INFORMATION**

Product Code	20140
Description	200PAR46/3MFL
Standard Package	Case
Standard Package GTIN	10043168201404
Standard Package Quantity	12
Sales Unit	Unit
No Of Items Per Sales Unit	1
No Of Items Per Standard Package	12
UPC	043168201407

**⚠ CAUTIONS & WARNINGS**[See list of cautions & warnings.](#)**NOTES**

- For use with heat-resistant connector supported by bulb rim or metal shell of base.
- Lamp is made of heat resistant glass (HRG).