

T8 LED Tube Instruction Manual

1. General Description

This product is suitable for workshop, office, bank, hospital, shopping centre, subway, school, and other indoor places which require high luminosity and energy-saving illumination.

Features	
Illuminant: Ultra-bright white SMD LED	Light color: Warm White、 Natural White、 Cool White
Front Cover Finish: Matt Finish/Transparent	Frame: Used with frame
Wide Input Voltage: 100-277 VAC	High Efficiency Power Supply Low Power Consumption
Instant On/off response No flickering light	Constant current power supply Stable performance and Long lifespan

2. Technical Specifications

Basic Information

Model Number	Length (meters)	Material
MT8-60	0.6m	Aluminum alloy + PC
MT8-90	0.9m	Aluminum alloy + PC
MT8-120	1.2m	Aluminum alloy + PC
MT8-150	1.5m	Aluminum alloy + PC
MT8-180	1.8m	Aluminum alloy + PC

Electric Specifications { Temperature = 25°C }

Length	Part Number	Voltage (V)	Operating Frequency (HZ)	Input Current (MAX:A)	Rated Power (W)	Power Factor
0.6m	MT8-60	100~277	50/60	0.25	12	0.86
0.9m	MT8-90	100~277	50/60	0.30	15	0.89
1.2m	MT8-120	100~277	50/60	0.35	19	0.90
1.5m	MT8-150	100~277	50/60	0.40	25	0.90
1.8m	MT8-180	100~277	50/60	0.45	29	0.90

3. Warning

- 1) WARNING-Risk of fire or electric shock. LED Retrofit Kit installation requires knowledge of luminaires electrical systems. If not qualified, do not attempt installation. Contact a qualified electrician.
- 2) WARNING-Risk of fire or electric shock. Install this kit only in the luminaires that have the construction features and dimensions shown in the photographs and/or drawings.
- 3) WARNING-To prevent wiring damage or abrasion, do not expose wiring to edges of sheet metal or other sharp objects.
- 4) WARNING: To avoid potential fire or shock hazard, do not use this retrofit kit in luminaires employing shunted bi-pin lamp holders. Note: Shunted lamp holders are found only in fluorescent luminaires with Instant-Start ballasts. Instant-start ballasts can be identified by the words "Instant Start" or "I.S." marked on the ballast. This designation may be in the form of a statement pertaining to the ballast itself, or may be combined with the marking for the lamps with which the ballast is intended to be used, for example F40T12/IS. For more information, contact the LED luminaire retrofit kit manufacturer.
- 5) Installers should not disconnect existing wires from lamp holder terminals to make new connections at lamp holder terminals. Instead installers should cut existing lamp holder leads away from the lamp holder and make new electrical connections to lamp holder lead wires by employing applicable connectors.
- 6) "This luminaire has been modified and can no longer operate the originally intended lamp," shall be marked on the retrofit luminaire where readily visible by the user during normal maintenance including re-lamping.
- 7) LED Lamp Replacement Marking – Identification of the replacement LED lamp type/model to be used along with manufacturer and ordering information.
- 8) For a linear tubular LED lamp conversion, there shall be text or a diagram showing how the supply connections were made to the lamp holders so the correct connections will be made to the lamp when the lamp is installed or replaced.

"Not for use with dimmers."

"Caution - Risk of Electric Shock – Use In Dry Locations Only."

Only use in Type IC Listed Fluorescent Maximum Three lamped troffer style luminaire without diffuser

THIS DEVICE IS NOT INTENDED FOR USE WITH EMERGENCY EXITS

Remove thermal protector used in existing recessed luminaire if any.

-Do not install in a raceway or a luminaire marked for through branch wiring.

Always connect ground lead to fixture where applicable.

Provided minimum 110 mm between tube to tube spacing.

4. Installation

Turn on the power supply to check whether the light tube is working properly.

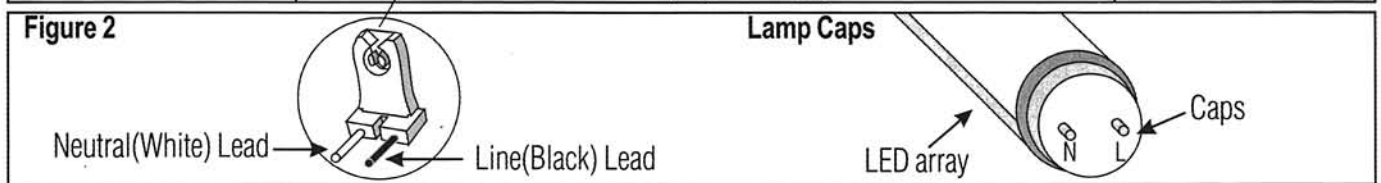
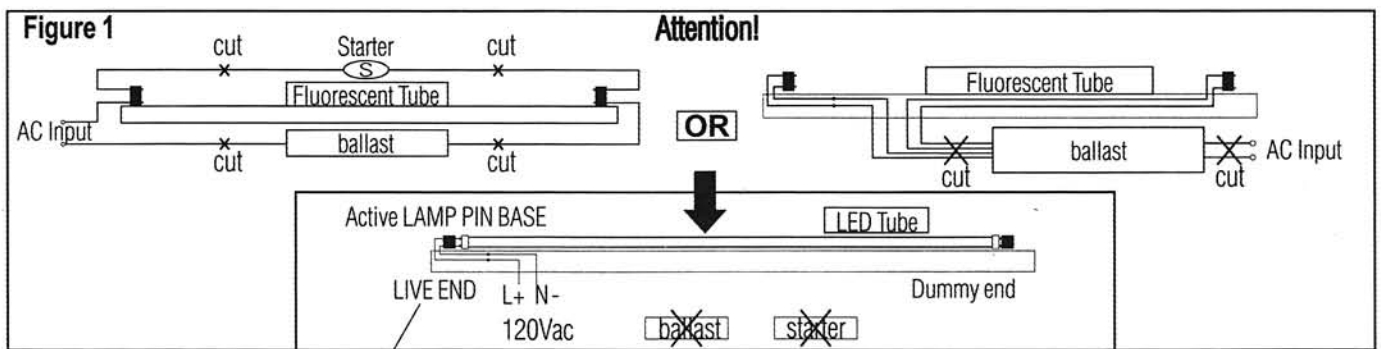
Step 1 - Disconnect all power to the lamp fixture.

Step 2 - Take off the fluorescent lamp.

Step 3 - Remove the ballast and starter where applicable.

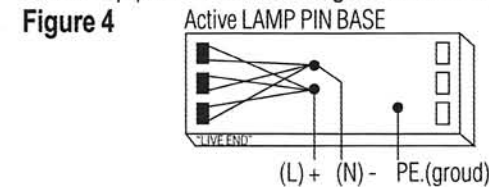
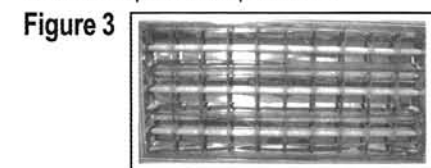
Step 4 - Designate one side of the fixtures lamp sockets as the "LIVE END" and mark for future reference.

Step 5 - Connect the positive lead to one of the two wires connected to the lamp pin base and connect the negative lead to the second of the two wires connected to the same lamp pin base (above), and the lamp pin L to connect lamp base positive lead, the lamp pin N to connect lamp base negative lead. All connection are made by wire nuts.



*Be sure that the splices or connector should be insulated reliably, and they should be in the enclosed splice compartment."

*For any 1,2,3, bulb fixture, simply connect all the positive leads from each lamp pin bases to the positive lead in and connect all the negative leads from each lamp pin bases to the negative lead in Figure 4.



Steps 6: Mount the clip to the fixture.

Drill three holes(3 mm diameter) to secured the clips by screw and nut on the lamp fixture, 3 clips on a 2.4m lamp fixture, and each 590mm has a clip. Please see **picture E**

Steps 7: Install the LED lamp to the retrofitted luminaires.

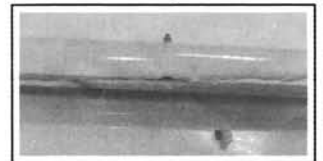
Steps 8: Put the lamp into the clip. After inserting the lamp to the lamp holder, then put the lamp into the clips.

Please see **picture G**.

Picture E



Picture G



Step 9 - Install led tube light in fixture matching the L side of the lamp to the "LIVE END" side of the fixture (Figure 5). After having fixed it, turn the tube 90°, ensure that the tube is well installed to the lamp fixture.(Figure 4).

Step 10 - "After modification completes, then affix the Lamping Replacement Marking label and cautionary label to painted surface and bare aluminum, located this where visible during re-lamping on the retrofitted luminaire".

Step 11 - Wiring method: Wire the brown line to the cable L(live wire), and blue one to line N (null line), yellow green one to G(ground). Please see the above photo for details.(Figure 4)

5. Usage Instructions

➤ Ambient Working Requirements

- Working temperature : Max 40°C
- Storage temperature : -40~60°C
- Storage humidity : 10%~90%

➤ Cautions

- 1) In order to ensure the product work properly, please use the power supply within indicating voltage range.
- 2) Please follow the correct installation steps to install the product. Please DO NOT touch the tube while tube is working.
- 3) Please turn off the power supply (cut off Live wire and Neutral wire at the same time) for the base to avoid the risk of electric shock while installing or uninstalling the product.
- 4) Do not use the products in the high humidity or dust environment, including but not limited to the following environment: bathroom, sauna room.
- 5) Do not look directly at LED light source for a long time, because the high-intensity light source may cause harm to eyes.
- 6) Please contact a qualified electrician for repair services when you find the following problems, and do not disassemble the tube light:
 - a. Electronic components are exposed to rain or other liquids splash.
 - b. Products release smell gas, abnormal sound and unusual flash.
 - c. The cover is broken .Debris goes into the base or the tube.

➤ Troubleshooting

If under proper operation, please confirm if the following reasons are causing proper functioning of product. If the problem persists and can not be resolved by the following reasons below, please discontinue usage and contact a qualified electrician.

- 1) The LED tube does not light after properly connecting the power supply as directed in the instruction manual.
- 2) Turn off the power supply and check whether the circuit screw on the LED tube is loose and if the sheet metal on the base is suitably fitted.
- 3) The lamp flashes when it is powered on.
- 4) Please call a qualified electrician to check and confirm if the power supply voltage is lower than luminaire's requirement.