

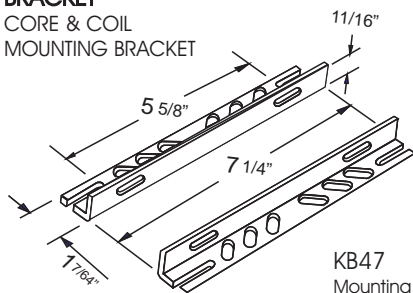
CATALOG NUMBER: E-MCA0DD351 FOR ONE 350 WATT, M131 METAL HALIDE PULSE START LAMP

| | |
|-----------------------------|------------------|
| Line Voltage | 480V |
| Regulation | |
| Line Volts | +/-10% |
| Lamp Watts | +/-10% |
| Frequency | 60 Hz |
| Circuit Type | CWA |
| Power Factor (min) | 90% |
| Insulation Class | H(180°) |
| Min. Ambient Starting Temp. | -20° F or -30° C |

| | |
|--------------------------|------|
| Line Voltage (Volts) | 480 |
| Line Current (Amps) | |
| Operating | 0.90 |
| Open Circuit | 0.80 |
| Starting | 0.40 |
| Input Watts (W) | 400 |
| Open Circuit Voltage (V) | 275 |
| Drop Out Voltage (V) | 240 |
| UL(1029) Bench Top Rise | C |
| Recommended Fuse (Amps) | 3 |

| | |
|-----------------------------------|-------------|
| HIGH POTENTIAL TEST (VOLTS) | |
| 1 Minute | 2000 |
| 2 Seconds | 2500 |
| Open Circuit Voltage Test (volts) | 250-300 |
| Short-Circuit Current Test (Amps) | |
| Secondary Current | 3.2 - 3.8 |
| Input Current (Amps) | 0.25 - 0.45 |

BRACKET CORE & COIL MOUNTING BRACKET



KB47
Mounting bracket for
Core & Coil Ballasts
(2 brackets with thru bolts)

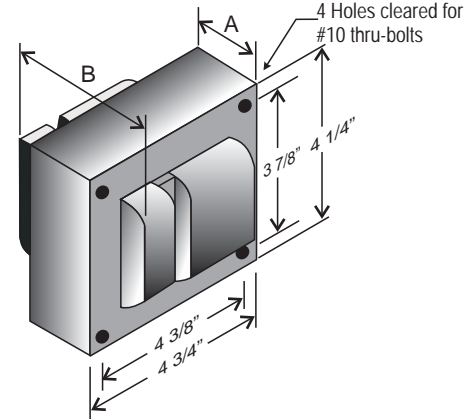


C-01
MOUNTING CLIP for round
case (Furnished as standard
with B suffix ballast)



I-01
MOUNTING CLIP for round
case (Furnished as standard
with B suffix ballast)

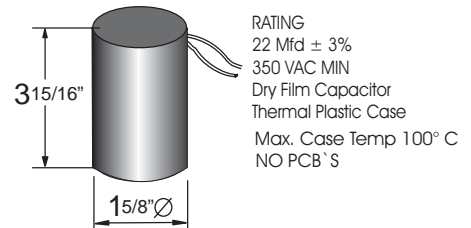
4 1/4" x 4 3/4" CORE



CORE AND COIL

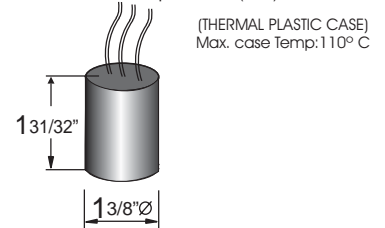
| | |
|-----------------------|-------|
| Dimension A (inches) | 1.80 |
| Dimension B (inches) | 3.70 |
| Weight (Lbs) | 11.80 |
| Lead Lengths (inches) | 12 |

CAPACITOR

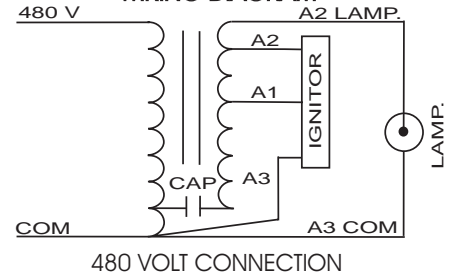


IGNITOR 37-63-AS-6.9-N7

Ballast to Lamp Distance (BTL): 2 feet



WIRING DIAGRAM



ORDERING INFORMATION

*** Add proper suffix to catalog number when ordering as indicated below:

No suffix = Core and Coil Only

B= Core and Coil, and Bracket

C=Core and Coil, and Capacitor

BC=Core and Coil, Capacitor and Bracket

Data is based upon tests performed by Industrias Sola Basic in a controlled environment and representative of relative performance. Actual Performance can vary depending on operating conditions. Specifications are subject to change without notice.

ISO 9001:2000



Made in Mexico by Industrias Sola Basic S.A de C.V.