

Specification Sheet : HH-MH-MLT5-1000

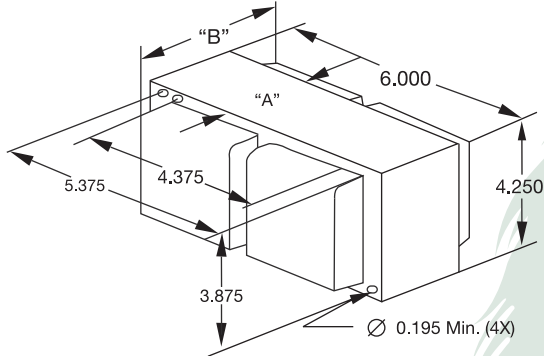


1000W M47
Core & Coil 5 Tap
Metal Halide Ballast

60 Hz MH CWA
Status: Production

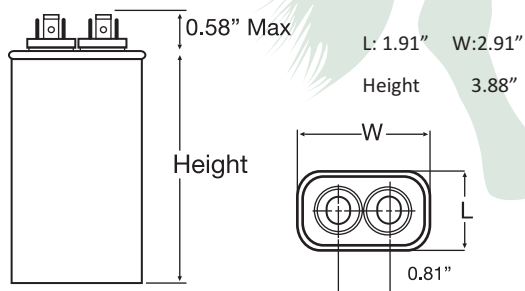
Mechanical Data:

4.25" X 6.0" Core



DIMENSION A	3.25 IN
DIMENSION B	5.19 IN
TOTAL WEIGHT	19.9 LBS
LEAD LENGTHS	12 IN

Capacitor: HHMHWCAP51000 (Oil Oval Type)



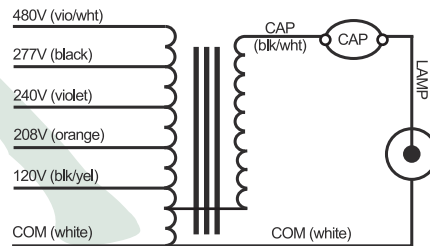
24µF 480V

Electrical Data:

INPUT VOLTS
MIN. STARTING TEMP
POWER FACTOR (>%)
ANSI CODE
CIRCUIT TYPE
WATTS INPUT
NOM OPEN CIRCUIT VOLTAGE (V)
RECOMMENDED FUSE (AMPS)
REGULATION
LINE VOLTS
LAMP WATTS
INPUT VOLTAGE AT LAMP DROPOUT
LINE CURRENT (AMPS)
OPERATING
OPEN CIRCUIT
STARTING
UL TEMPERATURE RATINGS
180° CLASS H
COIL TEMPERATURE CODE
CAPACITOR REQUIREMENT
MFD
MIN VOLT
IGNITOR
PART NUMBER
MAX DIST TO LAMP
HIGH POTENTIAL TEST (V)
OPEN CIRCUIT VOLTAGE TEST (VOLTS)
SHORT CIRCUIT CURRENT TEST (AMPS)
COIL MATERIAL

	120	208	240	277	480	
	-20°F/-30°C					
	90%					
	1000W, M-47					
	CWA					
	1087					
	420					
	20	15	10	10	6	
	±10%					
	±10%					
	70	130	150	180	280	
	9.2	5.3	4.6	4.0	2.3	
	4.0	2.4	2.1	1.9	1.1	
	8.3	4.8	4.2	3.6	2.1	
	D	C	C	B	C	
	1029					
	24mF					
	480V					
	N/A					
	50FT					
	1 MIN: 2000, 1 SEC: 2400					
	340 - 470					
SECONDARY	MIN	4.2				
	MAX	6.5				
INPUT	MIN	3.0	1.7	1.5	1.3	0.7
	MAX	8.9	5.2	4.6	4.0	2.2
	Cu/Al					

Wiring Diagram:



LEAD LENGTH (INCHES):
12

Options:

Basic Ballast Kit includes Ballast, Wet Capacitor, and Mounting Hardware only.
HID Ballast and Lamp Kits also available; please see website www.fulham.com