

# Specification Sheet : HH-HPS-MLT5-1000

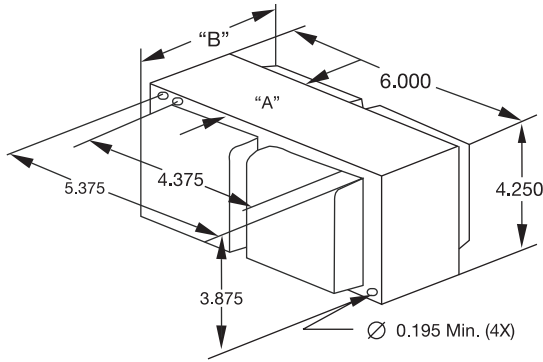


1000W S52  
Core & Coil 5 Tap  
High-Pressure Sodium Ballast

60 Hz HPS CWA  
Status: Active

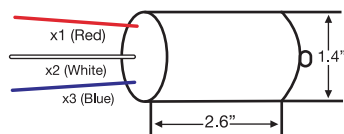
## Mechanical Data:

4.25" X 6.0" Core



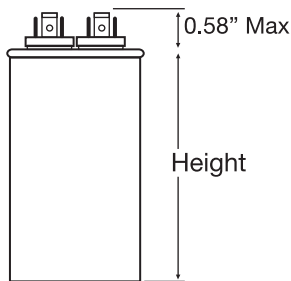
DIMENSION A	4.1 IN
DIMENSION B	6.1 IN
TOTAL WEIGHT	26.0 LBS
LEAD LENGTHS	12 IN

## Ignitor: HHHPSIG51000

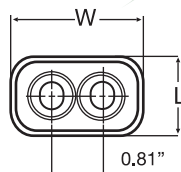


Pulse Height (kV):  
3.0 ~ 5.0  
Pulse Width (µs):  
4.0 @ 2.7kV

## Capacitor: HHHPSWCAP51000 (Oil Oval Type)



L:1.97" W:3.66"  
Height 2.88"



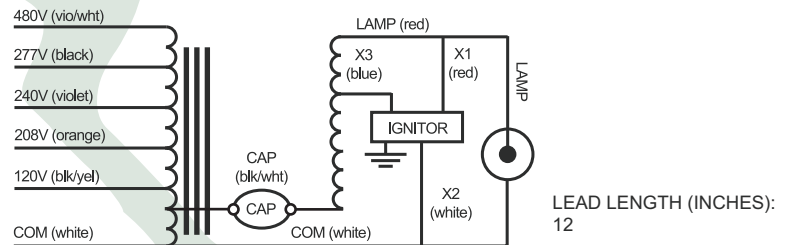
26µF 525V

## Electrical Data:

INPUT VOLTS  
MIN. STARTING TEMP  
POWER FACTOR (>%)  
ANSI CODE  
CIRCUIT TYPE  
WATTS INPUT  
NOM OPEN CIRCUIT VOLTAGE (V)  
RECOMMENDED FUSE (AMPS)  
REGULATION  
LINE VOLTS  
LAMP WATTS  
INPUT VOLTAGE AT LAMP DROPOUT  
LINE CURRENT (AMPS)  
OPERATING  
OPEN CIRCUIT  
STARTING  
UL TEMPERATURE RATINGS  
180° CLASS H  
200° CLASS N  
COIL TEMPERATURE CODE  
CAPACITOR REQUIREMENT  
MFD  
MIN VOLT  
IGNITOR  
PART NUMBER  
MAX DIST TO LAMP  
HIGH POTENTIAL TEST (V)  
OPEN CIRCUIT VOLTAGE TEST (VOLTS)  
SHORT CIRCUIT CURRENT TEST (AMPS)  
COIL MATERIAL

	120	208	240	277	480	
	-40°F/-40°C					
	90%					
	1000W, S-52					
	CWA					
	1070					
	430					
	25	15	12	10	6	
	±10%					
	±10%					
	70	125	135	150	250	
	9.7	5.6	4.9	4.2	2.4	
	7.1	4.1	3.6	3.1	1.8	
	6.3	3.4	3.1	2.7	1.5	
	E	D	D	D	C	
	A	A	A	A	A	
	1029					
	26					
	525					
	HHHPSIG51000					
	10 FT FROM IGNITOR					
	1 MIN: 2000, 1 SEC: 2400					
	400 - 480					
SECONDARY	MIN	4.7				
	MAX	8.0				
INPUT	MIN	2.7	1.6	1.4	1.2	0.7
	MAX	8.2	4.8	4.1	3.5	2.0
	Cu/Al					

## Wiring Diagram



## Options:

Basic Ballast Kit includes Ballast, Ignitor, Wet Capacitor, and Mounting Hardware only.  
HID Ballast and Lamp Kits also available; please see website [www.fulham.com](http://www.fulham.com)