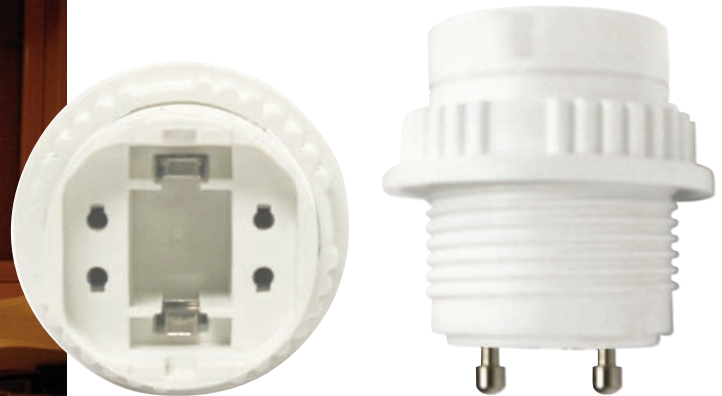
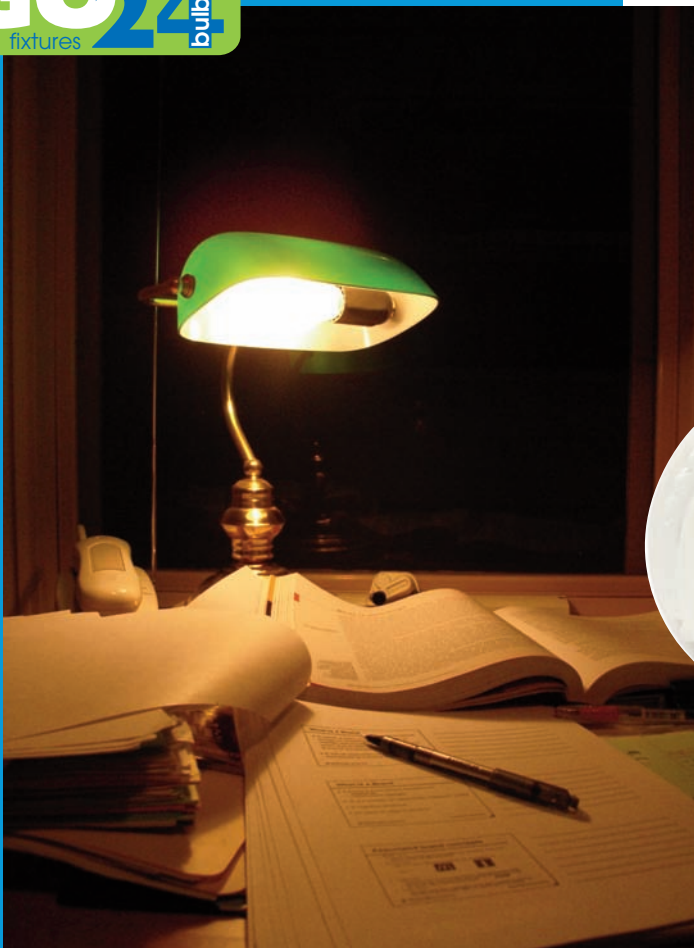


PRODUCT FOCUS **GU24**
SELF-BALLASTED SOCKETS

Compact Fluorescent Lamp



FOR >> Fixtures with the latest ballast & socket technology



ML13RGU

ML18RGU

ML26RGU

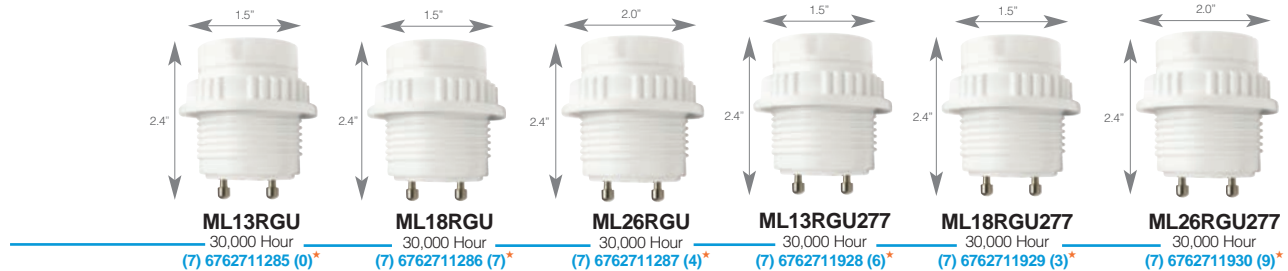
ML13RGU277

ML18RGU277

ML26RGU277

- Now with 90°C Max. Ballast Case Temperature
- Fits all fixtures with GU24 base
- Long life - up to 30,000 hours
- Saves up to 75% in energy costs - instant on, flicker-free
- Also available; full line of PL Lamps
- Available in 120V & 277V

PRODUCT FOCUS **GU24**
SELF-BALLASTED SOCKET
Compact Fluorescent Lamp



120V SELF-BALLASTED SOCKET SPECIFICATIONS

Watts	Order Code	Description	Type	Adapter Life (Hrs)	Pack Type	Case Pack	Dimensions (W" x MOL")
* 13	11285	ML13RGU Adaptor for 13W GU24 CFL	Two Piece	30,000	Box	48	1.5 x 2.4
* 18	11286	ML18RGU Adaptor for 18W GU24 CFL	Two Piece	30,000	Box	48	1.5 x 2.4
* 26	11287	ML26RGU Adaptor for 26W GU24 CFL	Two Piece	30,000	Box	48	2.0 x 2.4

277V SELF-BALLASTED SOCKET SPECIFICATIONS

Watts	Order Code	Description	Type	Adapter Life (Hrs)	Pack Type	Case Pack	Dimensions (W" x MOL")
13	70618	ML13RGU277 Adaptor for 13W GU24 CFL	Two Piece	30,000	Box	48	1.5 x 2.4
18	70619	ML18RGU277 Adaptor for 18W GU24 CFL	Two Piece	30,000	Box	48	1.5 x 2.4
26	70620	ML26RGU277 Adaptor for 26W GU24 CFL	Two Piece	30,000	Box	48	2.0 x 2.4

SELF-BALLASTED SOCKET LOCKING RING

Watts	Order Code	Model #	Description
N/A	70219	ML13/18RGU-RING	Locking ring for 13W & 18W Socket ITEM SOLD SEPERATLY
N/A	70221	ML26RGU-RING	Locking ring for 26W Socket ITEM SOLD SEPERATLY

SPECIAL NOTES

- >> Now with 90°C Max. Ballast Case Temperature
- >> 1 year warranty

APPLICATIONS

- Ceiling fixtures, pendants
- Outdoor fixtures, recess fixtures
- Wall sconces, vanity bars
- Floor & table lamps

BENEFITS

- Now with 90°C Max. Ballast Case Temperature
- Fits all fixtures with GU24 base
- Small size fits all standard fixtures
- Long life - up to 30,000 hours
- Saves up to 75% in energy costs
- Rapid start electronic ballast with flicker-free operation

SPECIFICATIONS

- Ballast Type >> Electronic
- Starting Method >> Instant Start
- Input Line Voltage >> 120VAC
- Input Line Frequency >> 50/60HZ
- Mini. Starting Temp. >> 0°F
- Max. Ballast Case Temp. >> 90°C
- Color Rendering Index >> 84

MAX11049-2-15

>> To see the full line of MaxLite PL Lamps go to www.maxlite.com and click on Product Line or go to www.maxlite.com/PDFs/FocusSheets/PLLampWebt.pdf

All specifications are subject to change without notice



FCC Certified
* UPC Codes



This device complies with Part 18 of the FCC rules. If interference occurs move this product away from the device or plug into a different outlet. This product may cause interference to radio equipment and should not be installed near maritime safety communications equipment or other critical navigation or communication equipment operating between 0.45-30MHz.