



## DATA SHEET

STEP LED extrusion – article number B4845

### Product characteristics

The stair extrusion is made from high quality double-anodized aluminum with the option of using LED diodes illuminating the upper and lower half-space. For the upper lighting use LEDs with the beam of light directed to the side, so called "side view" of the tape width up to 7 mm, while for the lower lighting use standard LED tape or strips that are 8 - 10 mm. LEDs mounted in the lower part of the extrusion can be hidden behind a special cover – K or certified HS (frosted or transparent) which are made of polycarbonate. HS cover is certified for excellent resistance to all weather conditions, UV radiation as well as is flame retardant. LEDs in the upper part of the extrusion can be covered with a special anti-slip rubber strip. The anti-slip rubber strip is included in the STEP extrusion set. Additional accessories designed for the extrusion are polypropylene end caps. The end caps protect the extrusion against dust or other undesirable particles that may cause soiling of the LED strip, and thus worsening lighting parameters. The extrusion is mounted to the surface with the use of mounting screws and adhesive.

The extrusion can be made waterproof and assembled as fixture of high integrity, which class of resistance against the ingress of solid objects, dust and water will be IP 67.

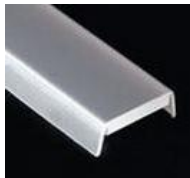
### Applications

STEP extrusion with the LED light source is used to illuminate stairs, and in particular as a discreet lighting in cinemas, shops, nightclubs and restaurants. In the sealed version, it can also be used for illuminating stairs located in the outer architectural space.

### Products related to the Extrusion



cover type K  
frosted (1547)  
transparent (1548)



cover type HS  
frosted (1369)  
transparent (1370)



end cap  
STEP-R, right (00303)  
STEP-L, left (00304)

### Technical specification

Ingress Protection Rating	IP 20 (standard), IP 67 (optional)
Available lengths	1 m / 2m (can be cut to any size)
Material	body – aluminum, cover – polycarbonate (PC), end cap – polypropylene (PP), anti-slip rubber strip – polyurethane (PUR)

Product is RoHS compliant.

