

DESCRIPTION

LAZER

The Lazer Two-Conductor track is available in two finishes and 4 lengths. The overall height is only 9/16" and the track has a decorative reveal at the ceiling line. It accepts both Lazer Track lampholders and Halo Power-Trac lampholders. Lazer Track is UL listed and CSA certified.

Catalog #		Type
Project		
Comments		Date
Prepared by		

SPECIFICATION FEATURES

A. Structural: Extruded aluminum .050" [1.3mm] nominal wall thickness

B. Line Conductor: Solid copper bus bars -cross section equivalent to #12 AWG wire.

C. Insulating Liner: Extruded polyvinyl insulator.

D. Neutral Conductor: cross section equivalent of #12 AWG wire.

E. Polarity Indicator: Visual polarity groove indicates proper electrical installation of lampholder adapter.

Construction

The structural channel is extruded aluminum with .050" nominal wall thickness. Conductors are solid copper bus bars encased in rigid extruded PVC insulators. Polarized connectors and end

caps are molded polycarbonate. Electrical capacity is 20 AMPS.

Size

Miniature Trac is only 9/16" (14mm) deep by 1 3/8" (35mm) wide.

Finishes

Miniature Trac is available in two finishes: White (P) and Matte Black, (MB).

Connectors

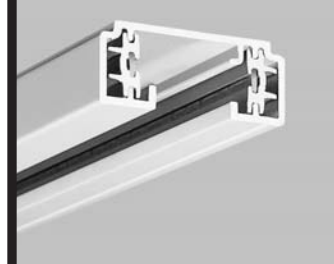
Connectors simply push into the ends of the Trac, eliminating splicing. Straight, right angle, X's, T's and flexible connectors allow track to be assembled in almost any pattern.

Grounding

Grounding is accomplished through a grounding channel in the track. The track maintains continuity to the building's grounding system through the ground contact fingers in each of the connectors.

Polarity

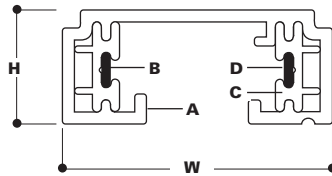
A visual polarity line on Lazer Track indicates proper electrical installation. Simply line up polarity on Lazer Track and lampholder adapter. .



**LZR102, LZR104
LZR106, LZR108**

**MINIATURE
SINGLE CIRCUIT
TRAC SYSTEM**

Lazer-Trac



ORDERING INFORMATION

SAMPLE NUMBER: LZR108P

Track	Finishes	Accessories	Connectors																																
<table border="1"> <tr> <td>LZR102</td> <td>LZR106</td> </tr> <tr> <td>LZR104</td> <td>LZR108</td> </tr> </table>	LZR102	LZR106	LZR104	LZR108	<table border="1"> <tr> <td>P=Satin White</td> </tr> <tr> <td>MB=Matte Black</td> </tr> </table>	P=Satin White	MB=Matte Black	(See Below)	<table border="1"> <tr> <td>LZR200</td> <td>Live End Feed with Junction Box Cover</td> </tr> <tr> <td>LZR201</td> <td>Live End Feed</td> </tr> <tr> <td>LZR202</td> <td>Floating Canopy and Connector</td> </tr> <tr> <td>LZR203</td> <td>Adjustable L and Straight Connector</td> </tr> <tr> <td>LZR204</td> <td>Conduit Adapter Feed</td> </tr> <tr> <td>LZR205</td> <td>Conduit Continuation Feed</td> </tr> <tr> <td>LZR206</td> <td>T-Bar Canopy</td> </tr> <tr> <td>LZR208</td> <td>Cord and Plug Feed</td> </tr> <tr> <td>LZR211</td> <td>Flexible Connector Feed</td> </tr> <tr> <td>LZR212</td> <td>Mini Joiner</td> </tr> <tr> <td>LZR213R</td> <td>"T" Connector - Right</td> </tr> <tr> <td>LZR213L</td> <td>"T" Connector - Left</td> </tr> <tr> <td>LZR214</td> <td>"X" Connector</td> </tr> </table>	LZR200	Live End Feed with Junction Box Cover	LZR201	Live End Feed	LZR202	Floating Canopy and Connector	LZR203	Adjustable L and Straight Connector	LZR204	Conduit Adapter Feed	LZR205	Conduit Continuation Feed	LZR206	T-Bar Canopy	LZR208	Cord and Plug Feed	LZR211	Flexible Connector Feed	LZR212	Mini Joiner	LZR213R	"T" Connector - Right	LZR213L	"T" Connector - Left	LZR214	"X" Connector
LZR102	LZR106																																		
LZR104	LZR108																																		
P=Satin White																																			
MB=Matte Black																																			
LZR200	Live End Feed with Junction Box Cover																																		
LZR201	Live End Feed																																		
LZR202	Floating Canopy and Connector																																		
LZR203	Adjustable L and Straight Connector																																		
LZR204	Conduit Adapter Feed																																		
LZR205	Conduit Continuation Feed																																		
LZR206	T-Bar Canopy																																		
LZR208	Cord and Plug Feed																																		
LZR211	Flexible Connector Feed																																		
LZR212	Mini Joiner																																		
LZR213R	"T" Connector - Right																																		
LZR213L	"T" Connector - Left																																		
LZR214	"X" Connector																																		
<table border="1"> <tr> <td>LZR102</td> <td>LZR104</td> <td>LZR106</td> <td>LZR108</td> </tr> <tr> <td>L = 2' nominal</td> <td>L = 4' nominal</td> <td>L = 6' nominal</td> <td>L = 8' nominal</td> </tr> <tr> <td>Actual length: 20-1/8" [511mm]</td> <td>Actual length: 44-1/8" [1121mm]</td> <td>Actual length: 68-1/8" [1730mm]</td> <td>Actual length: 98-1/8" [2492mm]</td> </tr> <tr> <td>W=1-3/8" [35mm]</td> <td>W=1-3/8" [35mm]</td> <td>W=1-3/8" [35mm]</td> <td>W=1 3/8" [35mm]</td> </tr> <tr> <td>H =9/16" [14mm]</td> <td>H =9/16" [14mm]</td> <td>H =9/16" [14mm]</td> <td>H =9/16" [14mm]</td> </tr> </table>	LZR102	LZR104	LZR106	LZR108	L = 2' nominal	L = 4' nominal	L = 6' nominal	L = 8' nominal	Actual length: 20-1/8" [511mm]	Actual length: 44-1/8" [1121mm]	Actual length: 68-1/8" [1730mm]	Actual length: 98-1/8" [2492mm]	W=1-3/8" [35mm]	W=1-3/8" [35mm]	W=1-3/8" [35mm]	W=1 3/8" [35mm]	H =9/16" [14mm]	H =9/16" [14mm]	H =9/16" [14mm]	H =9/16" [14mm]	<table border="1"> <tr> <td>Finish Codes</td> <td>Finish Codes</td> <td>Finish Codes</td> <td>Finish Codes</td> </tr> <tr> <td>P, MB</td> <td>P, MB</td> <td>P, MB</td> <td>P, MB</td> </tr> </table>	Finish Codes	Finish Codes	Finish Codes	Finish Codes	P, MB	P, MB	P, MB	P, MB	<table border="1"> <tr> <td>Accessories</td> </tr> <tr> <td>LZR207 T-Bar Mounting Clip</td> </tr> <tr> <td>LZR209 Monopoint Feed</td> </tr> <tr> <td>LZR210 Monopoint Feed—Low Voltage</td> </tr> </table>	Accessories	LZR207 T-Bar Mounting Clip	LZR209 Monopoint Feed	LZR210 Monopoint Feed—Low Voltage	
LZR102	LZR104	LZR106	LZR108																																
L = 2' nominal	L = 4' nominal	L = 6' nominal	L = 8' nominal																																
Actual length: 20-1/8" [511mm]	Actual length: 44-1/8" [1121mm]	Actual length: 68-1/8" [1730mm]	Actual length: 98-1/8" [2492mm]																																
W=1-3/8" [35mm]	W=1-3/8" [35mm]	W=1-3/8" [35mm]	W=1 3/8" [35mm]																																
H =9/16" [14mm]	H =9/16" [14mm]	H =9/16" [14mm]	H =9/16" [14mm]																																
Finish Codes	Finish Codes	Finish Codes	Finish Codes																																
P, MB	P, MB	P, MB	P, MB																																
Accessories																																			
LZR207 T-Bar Mounting Clip																																			
LZR209 Monopoint Feed																																			
LZR210 Monopoint Feed—Low Voltage																																			
<p>Current Limiter - End Feed</p> <p>LZRC201CB120=120W (1A @120V) LZRC201CB300=300W (2.5A @120V) LZRC201CB600=600W (5A @120V) LZRC201CB960=960W (8A @120V) LZRC201CB1200=1200W (10A @120V)</p> <p>Current Limiter - Center Feed</p> <p>LZRC203CB120=120W (1A @120V) LZRC203CB300=300W (2.5A @120V) LZRC203CB600=600W (5A @120V) LZRC203CB960=960W (8A @120V) LZRC203CB1200=1200W (10A @120V)</p> <p>Finishes</p> <p>P White MB Black</p>																																			

ADV082386

Supersedes ADV042022,
ADV012290 and ADV990388
11/08