

SORAA® VIVID 2 LED MR16 3000K 12VAC 10-12W



Narrow Flood and Flood



Narrow Spot



reddot design award
winner 2013



RoHS

Soraa Inc.
6500 Kaiser Drive,
Fremont, CA 94555
855 GO-SORAA
855 467-6722
www.soraa.com

OUTPUT	1250-6000 CBCP, 380-460 Lumens
BEAM	10°, 20°, 25°, 36°
COLOR	CCT: 3000K CRI>95, R9>95
APPLICATION	Halogen replacement for indoor applications

PERFORMANCE

CBCP matches standard halogen lamps
Single light source
Single crisp shadow
Dimmable to 20%
Power Factor: 0.93
12V (10.8 min, 13.2 max)

COLOR

CCT: 3000K
CRI>95, R9>95
White point accuracy within 3 SDCM
Rich saturated color rendering
Excellent color stability

OPTIMIZED FORM

ANSI standard MR16 form factor:
1.96" (50mm) W x 1.86" (47.6mm) H
Compatible with standard fixtures
Weight: 40g
Proprietary fanless aluminum design
provides superior thermal dissipation

HIGHLY COMPATIBLE

Works with magnetic and electronic
transformers and dimmers (see complete
list at www.soraa.com)
UL and CUL listed for use with 12VAC NEC
Class 1 and Class 2 systems

SPECIFICATIONS*

Reference Number	Product Code	Beam	Field	CBCP	Watts	Halogen Equivalent**	Lumens
MR16-50-B01-12-930-10	00269	10°	20°	6000	10	50W	380 (38.6 lm/W)
MR16-65-B01-12-930-20	00237	20°	38°	2975	11.5	65W	460 (40.5 lm/W)
MR16-65-B01-12-930-25	00245	25°	42°	2750	11.5	65W	460 (40.5 lm/W)
MR16-65-B01-12-930-36	00253	36°	60°	1250	11.5	65W	460 (40.5 lm/W)

*at stable operating conditions in well ventilated fixtures (25°C ambient) **Energy Star Minimum

LONG LIFE, LOW MAINTENANCE

Life of 35,000 hours
Three year warranty

ENERGY EFFICIENT

Saves over 80% of energy compared to
standard halogen lamps
Typical payback of one year or less

INTENDED USE AND APPLICATIONS

LED retrofit lamp to replace 12VAC
halogen MR16 lamps in recessed
downlights, track lighting, and other
indoor applications

Not for use with glass lenses or fully
sealed fixtures

Not for use in unventilated fixtures less
than 3"L x 3"W x 3"H.

Not for use in Emergency Fixtures or Exit
Signs

Operating Temperature: -40°C - 25°C
ambient, 80-100°C (120°C max) base

Soraa lamps are designed to safely turn
down in any thermal environment not
conducive to minimum airflow or proper
ventilation

CERTIFICATIONS

UL, CUL for 12VAC NEC Class 1 and Class
2 systems, FCC 47 CFR Part 15 and Part 18
(EMI), RoHS, CE, C-tick

12VAC



3000K

CRI
>95

R9
>95



DIM



Form Factor | Base | Voltage | CRI | CCT | Beam
MR16 - 65 - B01 - 12 - 930 - 25

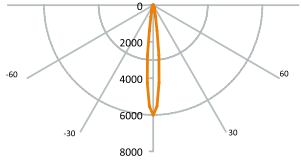
The diagram at left shows how to read the
different components of the reference number.
Base type B01 refers to the GU 5.3 base.

SORAA VIVID 2 MR16 LED 3000K 12VAC 10-12W

PHOTOMETRICS

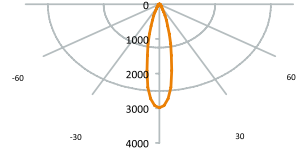
Narrow Spot - 10°

Distance to Floor	Beam Dia. (50% CBCP)	Foot-candles on Floor
3'	.5'	667
6'	1'	167
9'	1.6'	74
12'	2.1'	42
15'	2.6'	27



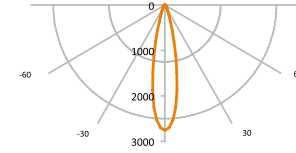
Narrow Flood - 20°

Distance to Floor	Beam Dia. (50% CBCP)	Foot-candles on Floor
3'	1.1'	331
6'	2.1'	83
9'	3.2'	37
12'	4.2'	21
15'	5.3'	13



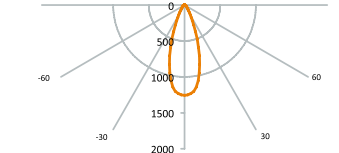
Narrow Flood -25°

Distance to Floor	Beam Dia. (50% CBCP)	Foot-candles on Floor
3'	1.3'	306
6'	2.7'	76
9'	4'	34
12'	5.3'	19
15'	6.7'	12

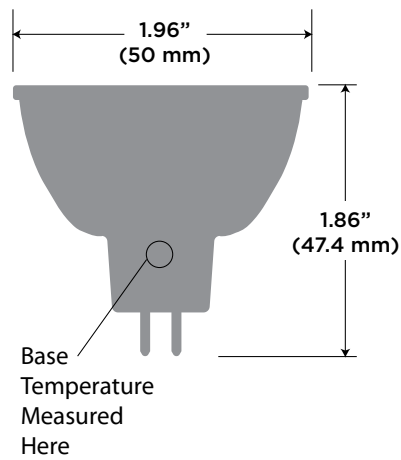


Flood -36°

Distance to Floor	Beam Dia. (50% CBCP)	Foot-candles on Floor
3'	1.9'	140
6'	3.9'	35
9'	5.8'	15
12'	7.8'	9
15'	9.7'	5

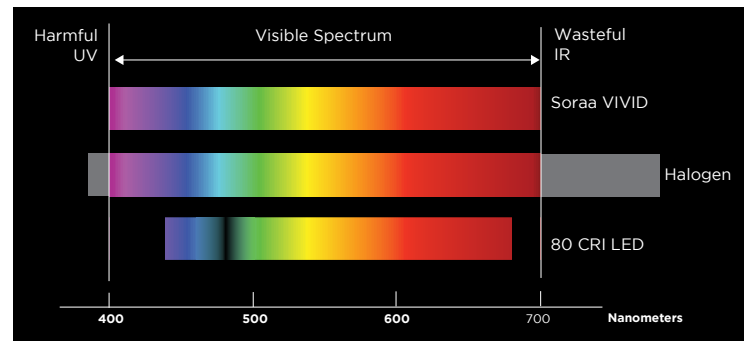
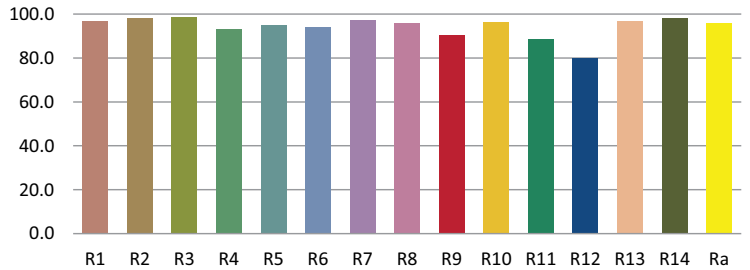


DIMENSIONS



COLOR RENDERING

CRI- Relative R Values



SAFETY NOTE ON HEAT

Soraa's unique LED technology allows its lamps to operate effectively and efficiently at higher temperatures than other LED lamps, resulting in more light output per diode. Although Soraa's lamps operate at cooler temperatures than halogen lamps, it is recommended that gloves be worn when handling bare lamps that have been energized.

TRANSFORMER/DIMMER COMPATIBILITY

Dimmable to 20% or lower, depending on dimmer. Complete transformer and dimmer compatibility information available at www.soraa.com.

Information and specifications subject to change. Rev I 6.7.13 D-110132

Soraa Inc. 6500 Kaiser Drive, Fremont, CA 94555
855 GO-SORAA / 855 467-6722 www.soraa.com