

NHIC-6LMRAT

6" IC Air-Tight LED Dedicated New Construction Housing
(Compatible with Cobalt, Marquise, Onyx and Pearl)

Type

Project

Catalog No.

Notes

PRODUCT DESCRIPTION

Dedicated new construction housing for use in insulated ceilings can be in direct contact with insulation. Air-tight construction provides energy savings by reducing the flow of air through the ceiling. The housing is dedicated and labeled for use with LED retrofit luminaires.

FEATURES

- IC Air-Tight energy saving by reducing the flow of air through the ceiling
- Rated for direct contact with insulation
- cULus listed for damp location and through branch circuit wiring

CONSTRUCTION

Plaster Frame: High quality 0.04" steel die cut one piece frame.

Housing: 0.040 aluminum housing with riveted cap adjusts for ceiling thicknesses from $\frac{5}{8}$ " to $1\frac{1}{4}$ ". Spring brackets accept torsion wing trim springs; slots on socket plate surface accept standard coil springs.

Air Flow Restriction: Housing has factory installed gaskets to restrict airflow from room into ceiling plenum to <2CFM (cubic feet per minute) in accordance with ASTM-283 Air-Tight requirements.

Clearance: "IC" Insulated ceiling housings are direct contact rated. Not to be used in direct contact with spray foam insulation.

Bar Hangers: Two $13\frac{3}{4}$ " to $24\frac{1}{2}$ " adjustable bar hangers with captive nails are included on frame. Bar hangers are parallel to junction box, but can be repositioned 90° perpendicular to junction box if desired. "L" Shaped bar hanger foot to align to bottom of construction joist. A T-Bar notch allow for easy installation in a suspended ceiling.

Junction Box: Prewired 25 cubic inch 0.064" thick galvanized steel, with seven $\frac{1}{2}$ " trade size knockouts and four Romex pryouts and snap on covers. All leads are #18AWG wire, the ground wire is connected to the bottom, and quick connectors are supplied on all leads. Maximum of 8 no. 12 AWG through branch circuit conductors suitable for at least 90°C permitted in junction box.

ELECTRICAL

Input Voltage: 120/277V or 277V (must specify)
Socket: Quick connect for LED downlights
Operating Temperature: 122°F (50°C) max.
Dimming: Specified by downlight

COMPATIBILITY

NRM2-61 = 6" Marquise II Reflector
NRM2-62 = 6" Marquise II Baffle
NLCBC-6 / NLCBC2-6 = 6" Cobalt Downlights
NOX-56 / NOXAC-56 / NOXTW-56 = 5" $\frac{1}{6}$ " Onyx Downlights
NOX-636 = 6" Onyx Square Reflector
NPR-56RND = 5" $\frac{1}{6}$ " Pearl Downlight

Step Down Transformer (converts 277V input to 120V):

Optional 50W step down transformer installed (NHIC-6LMRAT/277). Maximum of 6 no. 12 AWG through branch circuit conductors in junction box.

Emergency: Housing can be specified with an emergency battery installed on frame (Cobalt only). Requires top access.

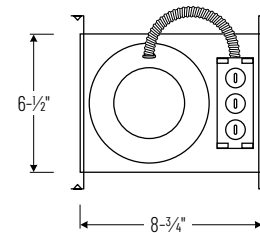
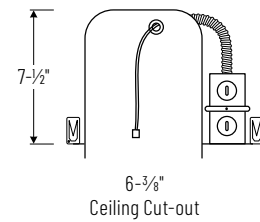
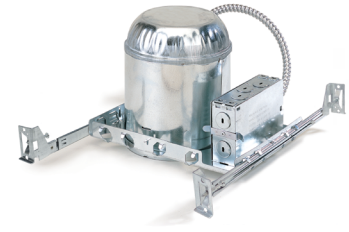
- Up to 7.5W emergency illumination with LEDs
- Illumination Time: 90min
- Voltage: 120/277 VAC, 60Hz
- Output Voltage: 15.0-50.0 VDC
- Remote test switch included

LABELS AND LISTINGS

- cULus or cETLus Listed for Damp Location (wet location when used with compatible downlights)
- ENERGY STAR certified
- Meets or exceeds ASTM-283 Air-Tight requirements
- Certified to the high efficacy requirements of California Title 24 JA8-2022 (when used with compatible downlight)
- RoHS compliant



PRODUCT IMAGES & DIMENSIONS



6" IC Air-Tight LED Dedicated New Construction Housing

Catalog No.

NHIC-6LMRAT = 6" IC Air-Tight Housing, 120/277V input (120V Triac/ELV dimming)

NHIC-6LMRAT/277 = 6" IC Air-Tight Housing, 277V input with 50W Step Down Transformer

NHIC-6LMRAT/EM = 6" IC Air-Tight Housing with Emergency Battery and Remote Test Switch, 120/277V input (Cobalt only - EM required)

NHIC-6LMRAT/277EM = 6" IC Air-Tight Housing with Emergency Battery and Remote Test Switch, 277V input with 50W Step Down Transformer (Cobalt only - EM required)

NHIC-6LMRAT/4W = 6" IC Air-Tight Housing, 120/277V input (120V Triac/ELV/0-10V & 277V 0-10V dimming, Cobalt only - LE4 required)

NHIC-6LMRAT/6WEM = 6" IC Air-Tight Housing with Emergency Battery and Remote Test Switch, 120/277V input (120V Triac/ELV/0-10V & 277V 0-10V dimming, Cobalt only - LE4EM required)

Example: **NHIC-6LMRAT** = 6" IC Air-Tight LED Dedicated New Construction Housing, 120/277V input