

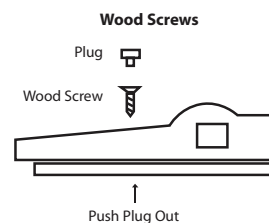
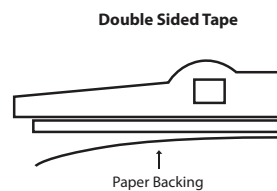
## WARNING!

### TO REDUCE THE RISK OF FIRE, ELECTRIC SHOCK OR INJURY TO PERSONS:

1. Turn off/unplug before mounting or interconnecting fixtures.
2. Do not look directly into LEDs when lit.
3. Do not operate fixture(s) with missing or damaged parts.
4. Do not install fixture(s) in any unventilated compartment.
5. Use only LED Power Supply, NSL part number LEDSH-24-60W, to power fixture(s).
6. Use only NSL joiner or extension cords to join fixtures to LED Driver and to interconnect fixtures.
7. Dry location only. Cabinet, shelf, or wall mount.
8. Securely mount with included double-sided tape or wood screws. Wood screws offer a more permanent temperature resistant option.
9. Not for use with dimmers.
10. Properly dispose of all small parts and packing material. Small parts and packing material may be hazardous to children.
11. Install in accordance to manufacturer's instructions, current local codes, and/or the current National Electric Code (NEC).

## INSTALLATION GUIDE

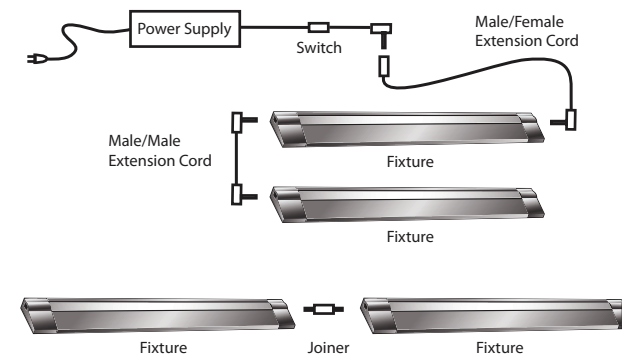
1. Each LED Shelf Star ships complete with the fixture, attached double-sided mounting tape, and two mounting screws.
2. The complete system includes an LED Power Supply, extension cords to interconnect the system, and the fixtures.
3. Lay out the entire system without mounting any of the parts. With the system laid out, make sure you have all the required parts keeping in mind the following limitations:
  - A. The LED Power Supply must be mounted within 5 feet of a wall outlet.
  - B. Do not exceed more than 108 LEDs per Power Supply (see **NOTE!**).
  - C. Do not exceed more than 91 feet of total extension cords can be placed between the LED Power Supply and the last fixture in the system.
4. Install fixtures as per the following two options:
  - A. Double-Sided Tape
    - (1) Clean mounting surface.
    - (2) Remove paper backing on double-sided tape.
    - (3) Firmly apply fixture to mounting surface.
  - B. Wood Screws
    - (1) Clean mounting surface.
    - (2) Remove plugs (two per fixture) from end caps of fixture, by pushing out endcap from bottom.
    - (3) Position fixture in desired location and attach fixture to mounting surface using two included wood screws.



5. Interconnect LED Power Supply to the first fixture by plugging the low voltage wire from power supply into either end of the first fixture.

**NOTE:** The 120VAC wire to the LED Power Supply, the power supply, and the 5 feet of low voltage wire of the power supply, are black in color. If you wish another color going into the fixture (i.e., white low voltage wire going into a white fixture), we do offer a 1-foot and a 6-foot extension cord with a male connector and a female connector in all three colors (white, black, brown). These male/female extension cords also allow the first fixture to be located greater than 5 feet from the LED driver. See diagram below.

6. Interconnect additional fixtures from the first by plugging additional male/male extension cords, or fixture joiners, from the first fixture into additional fixtures. See diagram below, and keep in mind the three limitations outlined in #3 above.



### NOTE!

Do not connect more than:

6 pieces of 18 LED fixtures

9 pieces of 12 LED fixtures

18 pieces of 6 LED fixtures

or any combination not to exceed 108 LEDs .

Do not exceed 91 feet of total extension cord per LED power supply.

## SPECIFICATIONS

Fixture Length	6 LED = 11.125" 12 LED = 21.825" 18 LED = 32.625"
Fixture Finish	White, Black, Bronze, Aluminum
Fixture Joiner	1" after installation
Extension Cord Length	1.5', 2', 3', 4', 5'
Joiner/Extension Cord Colors	White, Black, Brown
Maximum Fixtures Per LED Power Supply	Do not connect more than: 6 pieces of 18 LED fixtures 9 pieces of 12 LED fixtures 18 pieces of 6 LED fixtures or any combination not to exceed 108 LEDs. Do not exceed 91 feet of total extension cord per LED power supply.
Voltage	24 volt direct current
Wattage	6 LED = 2.4 watts 12 LED = 4.8 watts 18 LED = 7.2 watts
LED Color Temperature	3800K +/- 200K
Mounting	Doubled-side tape or wood screws
Connection	Molded connectors from 24VDC lead at LED Driver to each LED Shelf Star fixture. See schematic.

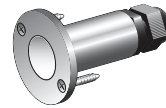
## SPECIFICATIONS (CONTINUED)

Agency Approval	UL listed for wall or cabinet mount, dry location only. Listing requires usage of LED Power Supply, (NSL part number LEDSH-24-60W) and joiner or extension cords.
-----------------	--

## OTHER LED PRODUCTS FROM NSL

### LED MiniDisc Light

The perfect mini light for  
outlining and illuminating  
architectural features.



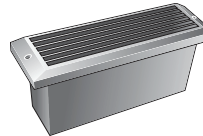
### LED Step Light

Long lasting LED  
technology in a die cast  
aluminum step light fixture.



### LED Brick Light

Long lasting LED  
technology in a brick-sized  
die cast aluminum fixture.



### LED Reflective Light

Medium size wall-mounted  
fixture that reflects the  
brightness of 22 LEDs.



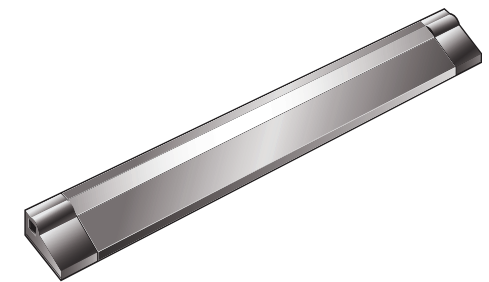
### Micro LED

Embedded LED/chip  
technology extruded in  
a flexible light strip.



## INSTALLATION INSTRUCTIONS

# LED SHELF STAR



## APPLICATIONS

Shelves  
Display Cases  
Cabinets  
Consoles  
Podiums  
Decorative Accents  
Work Stations

## NATIONAL SPECIALTY LIGHTING

ARCHITECTURAL AND DECORATIVE LIGHTING

LOUISVILLE, CO 80027

[www.nslusa.com](http://www.nslusa.com)

© 2008 National Specialty Lighting

**NSL**  
NATIONAL SPECIALTY LIGHTING

