

LED SCONCE LIGHT

ARCHITECTURAL AND DECORATIVE LIGHTING

Four fixture colors.



PRODUCTS ▼



Outdoor application with minimal ambient light



Indoor application with soft ambient light

APPLICATIONS

- ▶ HALLWAYS
- ▶ STAIRS
- ▶ ENTRYWAYS
- ▶ DOORWAYS
- ▶ GARAGES
- ▶ PORCHES
- ▶ WALKWAYS
- ▶ LOBBIES
- ▶ COLUMNS
- ▶ DIRECTIONAL ACCENTS
- ▶ ARCHITECTURAL ACCENTS

Shipping July 2011

STYLES & OPTIONS

AVAILABLE IN FOUR FIXTURE FINISHES



WHITE FINISH



FEATURES

- ▶ Energy usage of 7.7 watts per fixture.
- ▶ The same light output of Xenon/Halogen technology.
- ▶ 60,000-hour light source average life.
- ▶ CREE™ LEDs inside.
- ▶ Powder coated die cast aluminum construction.
- ▶ LED driver included in every fixture.
- ▶ Uses standard household Romex™ wire input/output, and mounts to a standard 4" x 4" junction box.
- ▶ Maximum of 66 fixtures per 110VAC, 15AMP circuit.
- ▶ Included LED Module short circuit connector.
- ▶ UL listed "Wet Location".

BENEFITS

- ▶ Energy savings from 80% vs. Xenon/Halogen technology.
- ▶ Provides more than enough light for illuminating halls, aisles, steps, or almost any traffic or accent area.
- ▶ Six times (6x) the average life of Xenon/Halogen technology.
- ▶ Consistent quality of a worldwide LED manufacturer. Replaceable LED Modules.
- ▶ Offers corrosion protection, strength and weight advantages, and consistency of finish.
- ▶ 110VAC input and output. No remote power source to hide or wire.
- ▶ No custom cords to buy. Wiring totally hidden within structure walls.
- ▶ Over twice the allowed fixtures per circuit as Xenon/Halogen technology.
- ▶ For illumination flexibility, one LED module can be unpowered.
- ▶ Suitable for indoor and outdoor use.

SCHEMATIC

BRONZE FINISH



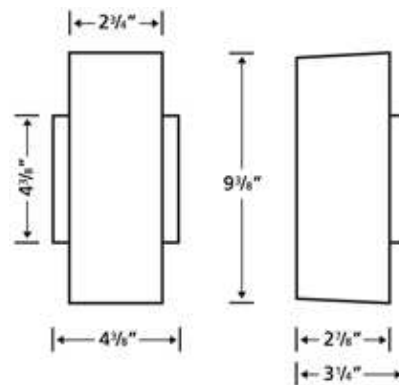
BLACK FINISH



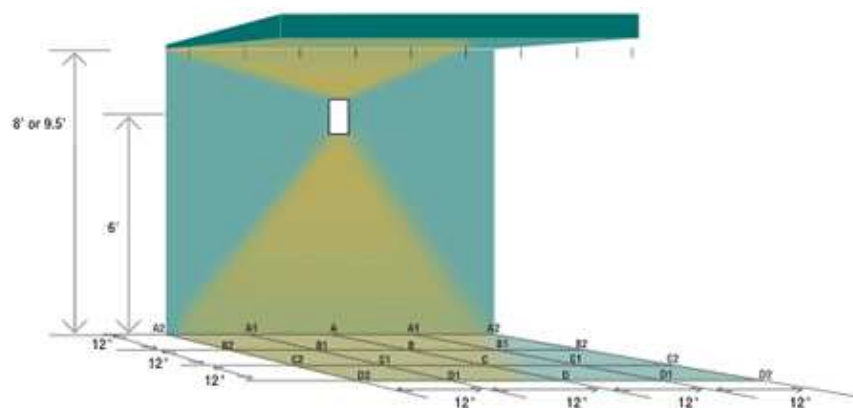
ALUMINUM FINISH

**Included in every fixture box:**

- (1) LED Sconce Light fixture
- (1) 4" x 4" mounting bracket
- (2) Bracket-to-fixture mounting bolts and cap nuts
- (1) Short circuit connector
- (1) Instructions

**SPECS**

Voltage	110VAC in out and output to every fixture. Integral LED Driver interior to every fixture powers two replaceable LED Modules.
Fixture Energy Rating	Both modules 110VAC, 70mA, 7.7 watts. One module 110VAC, 40mA, 4.4 watts.
LED Color Temperature	2900K +/- 200K
Average LED Module Life	CREE™ LEDs with 60,000 hours
Fixture Finish	Powder coated white, black, aluminum and bronze
Construction	Fixture is die cast aluminum for low fixture weight and corrosion protection. Junction box cover is stamped steel.
Lens	Tempered Glass
Wiring Options	110VAC can be parallel wired ("daisy chained") up to 66 fixtures maximum per circuit. Check local code and NEC for wiring selection.
Dimming	Not for use with dimmers.
Agency Approval	UL listed and labeled for Wet Location. Wall Mount only.

LED Sconce Photometrics**LED Sconce Light (wide opening down, narrow opening up)**

Floor Photometrics

Grid Location:	A	A1	A2	B	B1	B2	C	C1	C2	D	D1	D2
Illuminance in Footcandles:	1.83	1.66	1.23	1.73	1.54	1.18	1.35	1.25	0.98	0.94	0.89	0.75

Ceiling Photometrics (*ceiling height 8ft. above floor*)

Grid Location:	A	A1	A2	B	B1	B2	C	C1	C2	D	D1	D2
Illuminance in Footcandles:	20.3	0.32	0.06	11.16	0.21	0.05	1.24	0.08	0.03	0.04	0.02	0.01

Ceiling Photometrics (*ceiling height 9.5ft. above floor*)

Grid Location:	A	A1	A2	B	B1	B2	C	C1	C2	D	D1	D2
Illuminance in Footcandles:	6.66	0.63	0.08	4.97	0.85	0.07	2.68	1.19	0.05	1.06	0.19	0.03

ONE LED MODULE CAN BE UNPOWERED

For application requiring light in the up or down direction only.



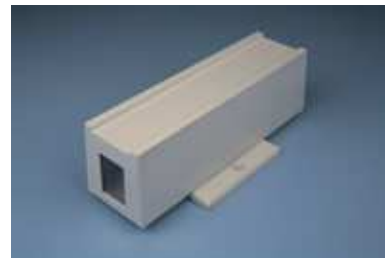
Both modules powered



Short circuit connector installed in upper module

LIGHT OUTPUT FLEXIBILITY

Each fixture has a narrow and a wide opening on opposite fixture ends. Fixtures are symmetrical and mounting can be accomplished with either opening pointing up or down.

**Narrow Opening**
7/16" W x 1-5/8" H**Wide Opening**
1-3/16" W x 1-5/8" H**MOUNTS TO STANDARD 4" x 4" JUNCTION BOX**

For ease of either new construction or energy saving retrofit installation.

