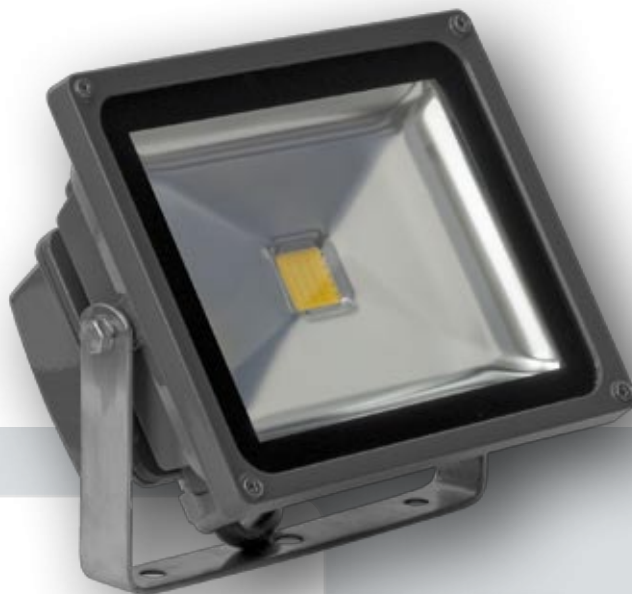


**HIGH POWER LED LIGHTS**  
**30 Watt LED Flood Light**

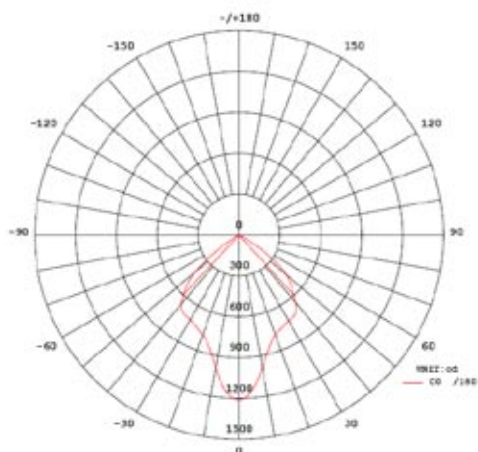


**Specifications:**

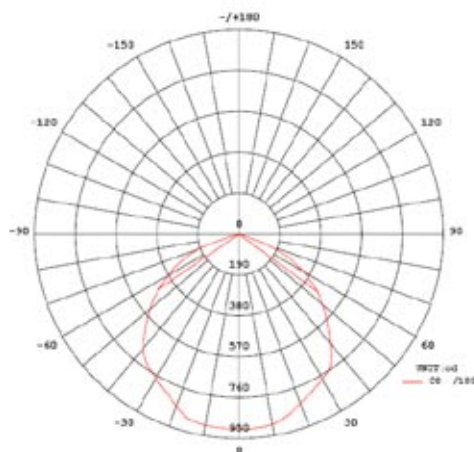
Light Source:	1x 30 Watt Ceramic LED
Power Consumption:	30 Watt
Efficiency:	>90%
Lumens Per Watt:	70 Lms./ Watt
Beam Angle:	50° or 100°
LED Colours:	3900K Soft White
Colour Rendering Index:	>80 CRI
Operating Voltage:	AC85V~265V 50~60Hz
Material Fixture:	Aluminium: ZL102 Mn0.2~0.5, mg<=0.25, Si<=0.65
Affix Materials & mounting Bracket :	A4 316 Stainless steel
IP Rating:	IP67
Finish:	Double Powder Coated Grey or White
Dimensions:	225mm x 185mm x135mm (W x H x D)
Certifications:	CE Certificate Number: B-E09110908 EMC Directive 204/108/EC EN 55015: 2006+A1: 2007, EN 61000-3-2: 2006/A2: 2009; EN 61000-3-3: 2008; EN 61547: 1995+A1: 2000



**Luminous Intensity Light Distribution Diagram**



**50° Beam Angle**



**100° Beam Angle**

**Grey or White Finish**

