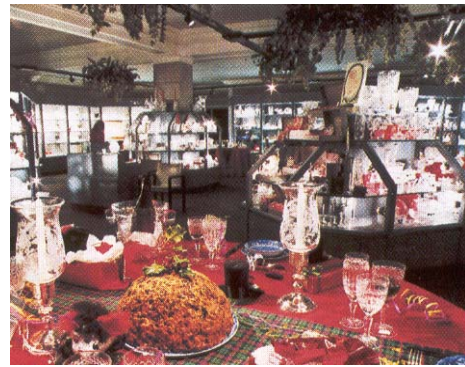
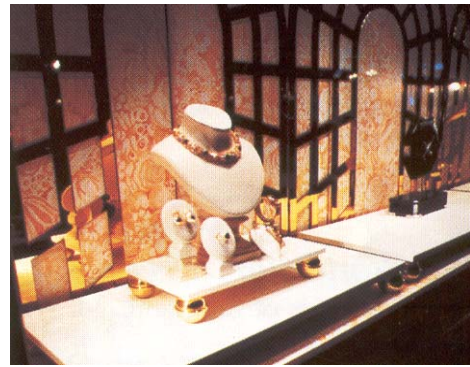


# Product Summary

## PRECISE™ with ConstantColor® Coating

Ansi Code	Product Order Code	Description	Watts	Volts	Avg. Life (Hrs.)	Approx. Beam Spread Angle	Center Beam Candle Power	Approx. Color Temp. (Kelvin)	Forward Lumens
EZX	20816	Q20MR16/C/VNSP7	20	12	3000	7°	7750	2900	200
ESX	20815	Q20MR16/C/NSP15	20	12	5000	12°	3800	2900	225
BAB	20814	Q20MR16/C/FL40	20	12	5000	40°	500	2900	240
FRA	20826	Q35MR16/C/SP20	35	12	5000	20°	3625	3000	520
FMW	20825	Q35MR16/C/FL40	35	12	5000	40°	1000	3000	550
EZY	20830	Q42MR16/C/VNSP9	42	12	3500	9°	12500	3000	575
EXT	20839	Q50MR16/C/NSP15	50	12	6000	14°	9500	3050	750
EXZ	20835	Q50MR16/C/NFL25	50	12	6000	25°	3000	3050	800
EXK	20834	Q50MR16/C/NFL30	50	12	6000	30°	2500	3050	850
EXN	20833	Q50MR16/C/FL40	50	12	6000	40°	1700	3050	800
FNV	20832	Q50MR16/C/WFL55	50	12	6000	55°	900	3050	825
EYF	20843	Q71MR16/C/NSP15	71	12	4000	15°	11000	3050	1125
EYJ	20841	Q71MR16/C/NFL25	71	12	4000	25°	4950	3050	1175
EYC	20840	Q71MR16/C/FL40	71	12	4000	42°	2000	3050	1200



## Cover Glass PRECISE™ with ConstantColor® Coating

Ansi Code	Product Order Code	Description	Watts	Volts	Avg. Life (Hrs.)	Approx. Beam Spread Angle	Center Beam Candle Power	Approx. Color Temp. (Kelvin)	Forward Lumens
ESX	20858	Q20MR16/C/CG/NSP15	20	12	5000	12°	3350	2900	225
BAB	20857	Q20MR16/C/CG/FL40	20	12	5000	40°	475	2900	225
FRB	20864	Q35MR16/C/CG/NSP12	35	12	5000	12°	7500	3000	500
FRA	20860	Q35MR16/C/CG/SP20	35	12	5000	20°	3200	3000	525
FMW	20859	Q35MR16/C/CG/FL40	35	12	5000	40°	900	3000	525
EXT	20872	Q50MR16/C/CG/NSP15	50	12	6000	14°	8500	3050	725
EXZ	20871	Q50MR16/C/CG/NFL25	50	12	6000	25°	2800	3050	750
EXN	20867	Q50MR16/C/CG/FL40	50	12	6000	40°	1450	3050	775
FNV	20865	Q50MR16/C/CG/WFL55	50	12	6000	55°	850	3050	775
EYF	20876	Q71MR16/C/CG/NSP15	71	12	4000	15°	9800	3050	1100
EYJ	20874	Q71MR16/C/CG/NFL25	71	12	4000	25°	4600	3050	1125
EYC	20873	Q71MR16/C/CG/FL40	71	12	4000	42°	1950	3050	1125

GE Consumer & Industrial  
Lighting

## GE ConstantColor® PRECISE™ MR 16 Lamps

The only choice for  
Consistent High Quality  
Light and Long Life



imagination at work

# GE ConstantColor® PRECISE™ MR16 Lamps



Consistent High Quality Lighting Lamp-to-Lamp over Life, plus UV Control.

Now with up to 6,000 Hour Life.



GE's exclusive ConstantColor reflector coating assures consistent white light with no color shift ever, throughout the life of the lamp.

And GE 50-Watt ConstantColor PRECISE lamps now have an extra long 6000 hour life.

In MR16 lighting, there's only one choice to show your merchandise, furnishing and décor in the best light... GE ConstantColor PRECISE.

## CONSISTENT WHITE LIGHT OVER LIFE

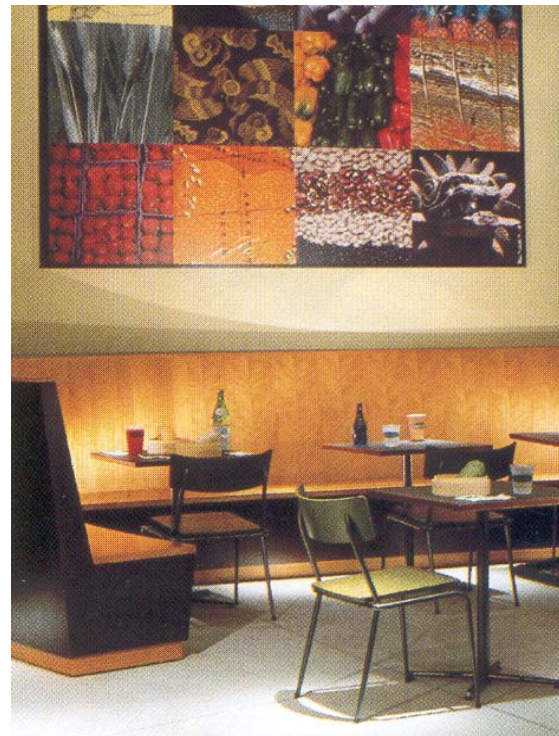
Only GE ConstantColor PRECISE MR16 lamps, with the exclusive ConstantColor reflector coating, delivers consistent white light over their rated life.

Crisp white halogen light provides dramatic accents and highlights. Colors appear rich, vibrant and natural.

Ordinary MR16 lamps can produce a murky, green light as they age, discoloring lighted objects.

## MORE LIGHT OVER LIFE

GE's exclusive ConstantColor coating means no light loss due to coating degradation. The result is over 90% maintained light output over life. The GE ConstantColor coating withstands the test of time.



**GE ConstantColor PRECISE...**  
The only MR16 choice for consistent quality lighting over life.

## LONGEST LIFE

ConstantColor PRECISE lamps last up to 6000 hours...that's 2000 hours longer than most MR16s.

## UV CONTROL

ConstantColor PRECISE lamps are designed to control UV without reducing light. UV Control means less fading and discoloration of objects being lighted.

## CONSTANTCOLOR PRECISE COVER GLASS LAMPS

The advantages of ConstantColor PRECISE plus a glass lens to maintain efficiency.

## BULB/REFLECTOR PROTECTED DURING REPLACEMENT

Cover glass eliminates fingerprints on bulb and reflector areas which can reduce light output. Also reduced possibility of damage to the reflector from careless handling.

## A CLEANER BULB FOR MORE LIGHT

Bulb and reflector are protected from dust and dirt which can substantially reduce light output.

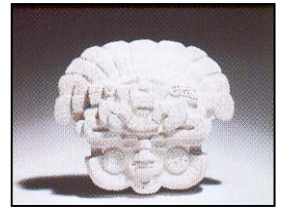
Clear glass lens retains the optical advantages that made GE PRECISE lamps the industry standard.

# See the DRAMATIC DIFFERENCE with GE ConstantColor® PRECISE™ Lamps

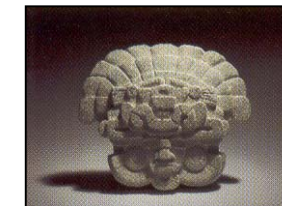


Ordinary MR16

10 HOURS

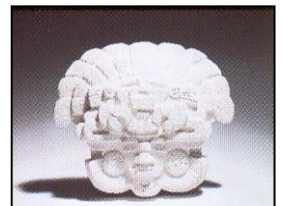


GE ConstantColor PRECISE

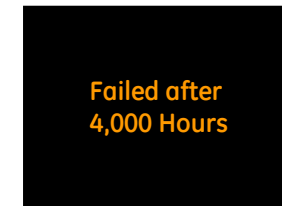


Ordinary MR16

3000 HOURS

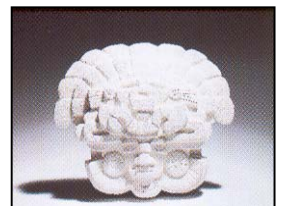


GE ConstantColor PRECISE



Failed after 4,000 Hours

6000 HOURS



GE ConstantColor PRECISE

## GE ConstantColor® PRECISE™ Lamp at 3000 Hours



Competitive MR16 Lamp at 3000 Hours