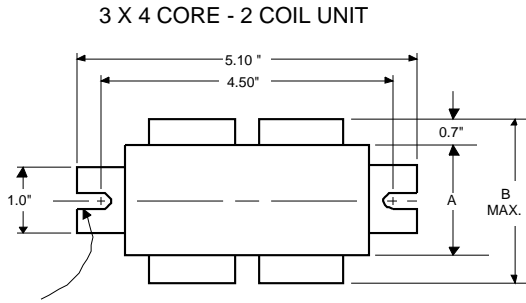




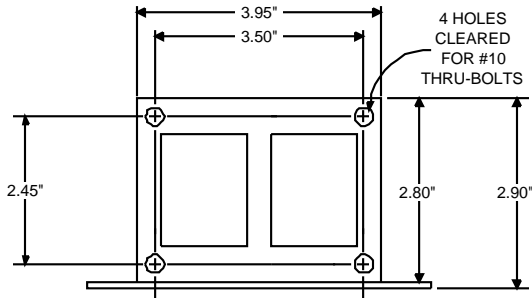
Metal Halide Lamp Ballast

Catalog Number 71A5570
For 175/150W M57/M107
60 Hz CWA
Status: Active

DIMENSIONS AND DATA



0.25" WIDE
2 SLOTS

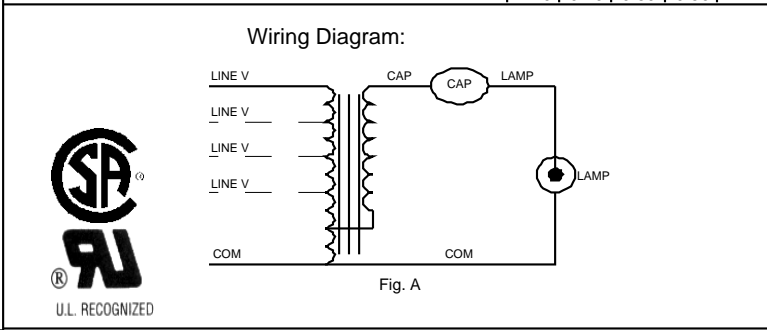


	120	208	240	277
INPUT VOLTS				
CIRCUIT TYPE	CWA			
POWER FACTOR (min)	90%			
REGULATION				
Line Volts	±10%			
Lamp Watts	±10%			
LINE CURRENT (Amps)				
Operating.....	1.80	1.04	0.90	0.80
Open Circuit.....	1.80	1.04	0.90	0.80
Starting.....	1.30	0.75	0.65	0.55
UL TEMPERATURE RATINGS				
Insulation Class	H(180°C)			
Coil Temperature Code	1029			
MIN. AMBIENT STARTING TEMP.	-20°F or -30°C			
NOM. OPEN CIRCUIT VOLTAGE	305			
INPUT VOLTAGE AT LAMP DROPOUT.....	60	104	120	138
INPUT WATTS	210			
RECOMMENDED FUSE (Amps).....	5	3	3	2
CORE and COIL				
Dimension (A)	2.50			
Dimension (B)	3.70			
Weight (lbs.)	6.75			
Lead Lengths	TERM"			
CAPACITOR REQUIREMENT				
Microfarads	10.0			
Volts (min.)	400			
Fault Current Withstand (amps)	400			
60 Hz TEST PROCEDURES (Refer to Advance Test Procedure for HID Ballasts - Form 1270)				
High Potential Test (Volts)				
1 minute	2000			
2 seconds	2500			
Open Circuit Voltage Test (Volts)	275-335			
Short-Circuit Current Test (Amps)	275-335			
Secondary Current	1.50-1.90			
Input Current.....	0.80	0.45	0.40	0.30
	1.20	0.70	0.60	0.50

Capacitor: 7C100M40-R



Capacitance: 10
 Dia/Oval Dim: 1.5
 Height: 3.75
 Temp Rating: 105°C



Ignitor: NA

This ballast does not require the use of an ignitor.

Typical Ordering Information

(please call Advance for suffix availability)

Order Suffix	Description
510D	Ballast w/Welded Bracket & Dry Film Capacitor
600	Ballast Only, No Capacitor
610	Ballast with Welded Bracket, No Capacitor

Data is based upon tests performed by Advance Transformer in a controlled environment and representative of relative performance. Actual performance can vary depending on operating conditions. Specifications are subject to change without notice.

ADVANCE

O'HARE INTERNATIONAL CENTER · 10275 WEST HIGGINS ROAD · ROSEMONT, IL 60018
 Customer Support/Technical Service: Phone: 800-372-3331 · Fax: 630-307-3071
 Corporate Offices: Phone: 800-322-2086

10/19/04