

GE Precise™ IR Energy Saving MR16

Energy Savings

Use a 37 watt Precise IR to replace a standard 50 watt MR16 and reduce energy consumption by 26% vs standard MR16 lamps

Halogen IR Technology

Most of the wattage used by standard lamps generates invisible infrared light energy. The Precise IR halogen capsule has a special infrared coating which redirects this wasted electricity back onto the lamp filament. Using this recycled heat allows the lamp to consume less energy.

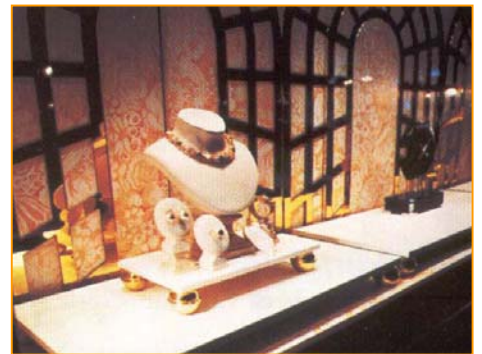
Crisp, white light

The hard coated dichroic reflector with an axial filament produces a very smooth beam pattern.

5,000 hour rated lamp life

UV Control

The IR coated capsule and the cover glass combine to virtually eliminate UV-B and UV-C radiation. Precise™ IR is ideal for heat sensitive applications and also reduces fading and discoloration.

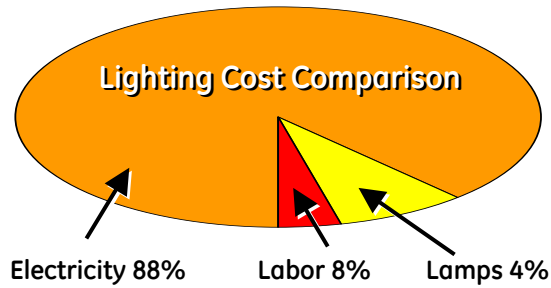


Applications
Retail Displays
Museum
Hotels
Restaurants
Commercial



imagination at work

GE Precise™ IR Energy Saving MR16



Cost Of Light

The purchase price of the lamps represents only a small fraction of the overall cost of light. Energy consumption is the largest expense and upgrading your lighting with high technology GE lamps can save thousands of dollars each year.

GE Lamps - Delivering Value to Your Customer's Bottom Line!

Product Information	GE Precise IR MR16	50 Watt Standard MR16s		
	GE Precise™ IR	GE Constant Color® Precise™ Lamps	Competitive 5000 Hour Lamps	Competitive 4000 Hour Lamps
<u>Product</u>	<u>Q37MR16/HIR</u>	<u>Q50MR16/C</u>	<u>50MR16</u>	<u>50MR16</u>
Description	Q37MR16/HIR	Q50MR16/C	50MR16	50MR16
Watts	37	50	50	50
Life	5000	6000	5000	4000
Beam Angle -CBCP	25-4400	25-3200	24-3200	25-3200
Annual Lamp Changes	0.88	0.73	0.88	1.10
Annual Operating Costs*				
Labor (Lamp Changes x Labor Cost)	\$1.76	\$1.47	\$1.76	\$2.20
Energy (\$/kWh x Watts x Hours / 1000)	<u>\$16.28</u>	<u>\$22.00</u>	<u>\$22.00</u>	<u>\$22.00</u>
Total	\$18.04	\$23.47	\$23.76	\$24.20
	Annual Savings/Socket	\$5.43	\$5.72	\$6.16
	% Savings	30%	32%	34%

*Assumes: Energy Rate - 10¢ kWh, replacement labor cost -\$2.00 per lamp, Annual Hours of Operation -4,400 hours

GE Precise™ IR - Ordering and Specification Information

Order Code	Description	Volts	Case Qty.	Watts	Filament Type	MOL (in)	Diameter (in)	Rated Life	Color Temp.	CBCP	Beam Angle	Base Type	Replaces Standard MR16
28709	Q20MR16/HIR/CG10	12	20	20	C-8	1.77	2	5000	3000	6000	10	2-Pin GU5.3	35 Watt
28710	Q20MR16/HIR/CG25	12	20	20	C-8	1.77	2	5000	3000	2300	25	2-Pin GU5.3	35 Watt
28718	Q20MR16/HIR/CG35	12	20	20	C-8	1.77	2	5000	3000	1000	35	2-Pin GU5.3	35 Watt
16715	Q37MR16/HIR/CG10	12	20	37	C-8	1.77	2	5000	3000	12,500	10	2-Pin GU5.3	50 Watt
16716	Q37MR16/HIR/CG25	12	20	37	C-8	1.77	2	5000	3000	4,400	25	2-Pin GU5.3	50 Watt
16717	Q37MR16/HIR/CG40	12	20	37	C-8	1.77	2	5000	3000	2,050	40	2-Pin GU5.3	50 Watt
16718	Q50MR16/HIR/CG10	12	20	50	C-8	1.77	2	5000	3000	15,000	10	2-Pin GU5.3	65-75 Watt
16719	Q50MR16/HIR/CG25	12	20	50	C-8	1.77	2	5000	3000	5,700	25	2-Pin GU5.3	65-75 Watt
16720	Q50MR16/HIR/CG40	12	20	50	C-8	1.77	2	5000	3000	2,600	40	2-Pin GU5.3	65-75 Watt

Cover glass allows for use in open fixtures.

For additional product and application information, please consult GE's Website: www.gelighting.com

Information provided is subject to change without notice. Please verify all details with GE. All values are design or typical values when measured under laboratory conditions, and GE makes no warranty or guarantee, express or implied, that such performance will be obtained under end-use conditions.